

Start Here

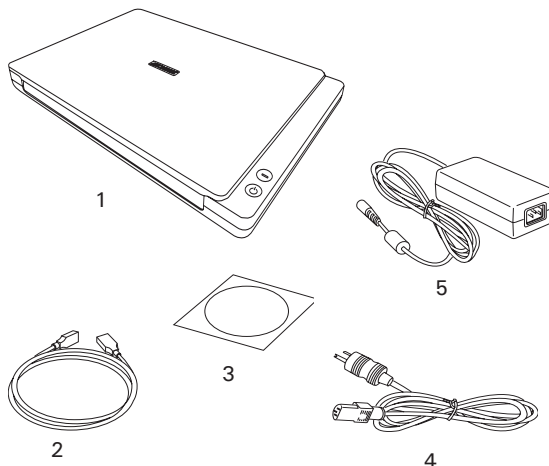
▼ Installing your Microtek XT5830 HS, XT5820 HS and XT5810 HS Scanner

1

Unpack Contents

Unpack your scanner package and check for major components.

1. Scanner
2. Hi-Speed USB cable
3. Software CDs/DVDs
4. Power cord
5. Power adapter

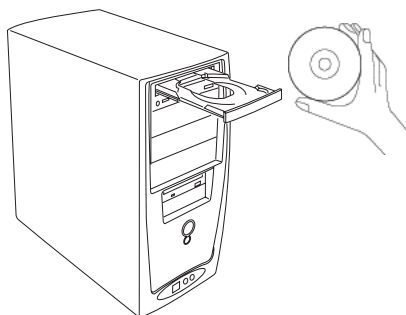


2

Install Software

Important: You must install software before connecting your scanner.

Always close any open programs and turn off Anti-virus utilities before installing software.



- A. Turn on your computer.
- B. Place the **Microtek Software CD/DVD** into a drive, and follow the on-screen instructions to install the scanner driver and software.
- C. Restart your computer at the end of all software installation.

NOTE: If the Microtek Software Installer screen does not come up automatically, double-click the following in succession: "My Computer"; the CD/DVD-ROM icon; then cdsetup.exe to start the installer program.

3

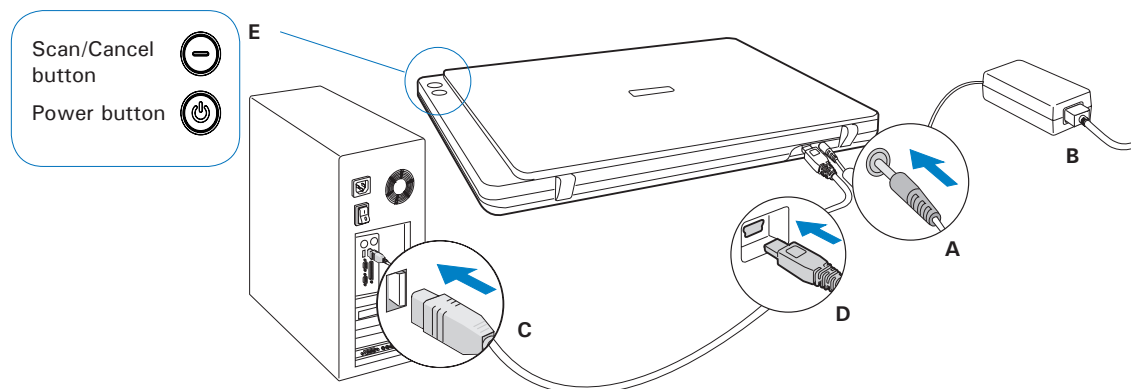
Connect Scanner

To the power adapter

- A. Connect the power adapter to the back of the scanner.
- B. Plug one end of the power cord into the power adapter, and plug the other end of the power cord into a wall outlet or other power source.

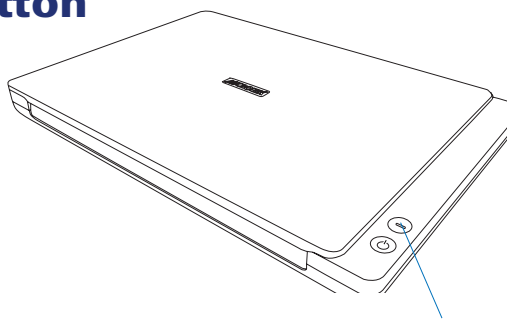
To the Hi-Speed USB cable

- C. Connect one end of the cable to your computer.
- D. Connect the other end of the cable to the scanner's USB port.
- E. Press and hold the Power button (⏻) for a while. Once the scanner is powered on, the Scan/Cancel button will be lighted up in green and the system will detect the scanner automatically.



Customize the Function Button

Your scanner is equipped with one Scan/Cancel button, used to automate a number of customized and predefined operations, such as scanning to a file, sending an image to your printer, scanning for OCR, etc. Customizing is done through the Scanner Button Settings interface in the ScanWizard DI, refer to the scanner's User's Manual for more details.



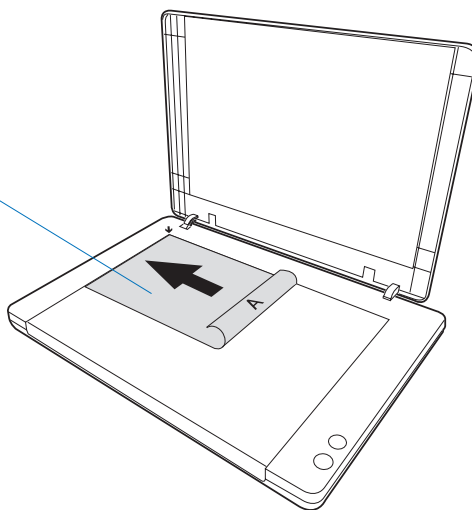
Scan/Cancel button: Start scan immediately or cancel a ongoing scan job.

Positioning Documents

1. Raise the scanner lid.
2. Place the document to be scanned facing down on the glass surface of the scanner. Position the top end of the document toward the left side of the scanner, with its edge firmly aligned against the vertical ruler of the scanner (shown in the graphic below).
3. Lower the scanner lid.

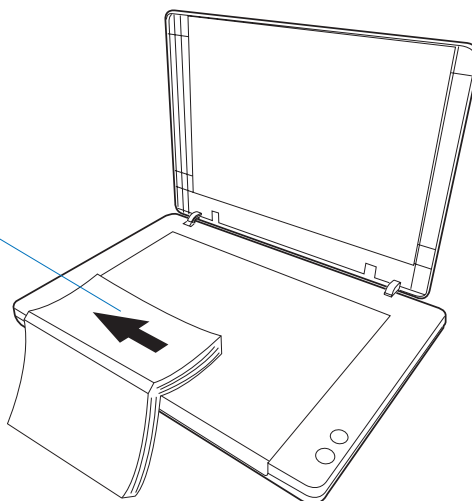
To scan a single-sheet of document:

With the document facing down on the glass surface of the scanner, align the document along the vertical ruler and set it to the Arrow mark (➡) on the upper left corner of the scanner's glass surface.



To scan a book or thick documents:

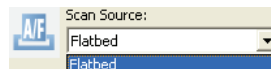
You may lift up the scanner lid out from its hinge sockets. Then, align the inner margin of a book along the side of the glass surface of the scanner as indicated in the graphic.



Scanning Documents

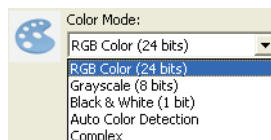
1. Put the document to be scanned facing down on the scanner's scan bed.
2. Launch ScanWizard DI as a stand-alone program by clicking on the *ScanWizard DI* icon on the desktop.
3. Click the *Scan Setup* button in the interface to activate the Scan Setup interface.
4. In the Scan Setup interface, follow the steps below to specify your basic settings.

- a) Select *Flatbed* in the Scan Source as your image input device.



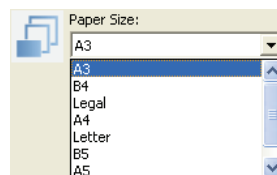
- b) Select the appropriate image type in the *Color Mode* as your image output type.

- Select *RGB Color (24 bits)* to scan the image in color.
- Select *Grayscale (8 bits)* to scan the image in grayscale.
- Select *Black & White (1 bit)* to scan the image in black-and-white.
- Select *Auto Color Detection* to scan the image in color or non-color based on the automatic judgement and detection of the system.
- Select *Complex* to scan the image in color, grayscale or non-color based on the customization.

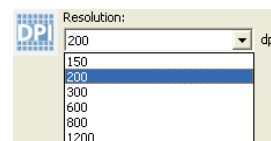


- c) Select a dimension in the *Paper Size* as your preview image size.

- d) Select a desired resolution in the *Resolution* for your image output resolution.



- e) If "Auto-crop" & "Auto-deskew" is selected, the scanner automatically detects the size of the original image, crops the full scan frame to fit the image, and removes unwanted black borders after the scan, as well as corrects the distorted image for proper alignment.



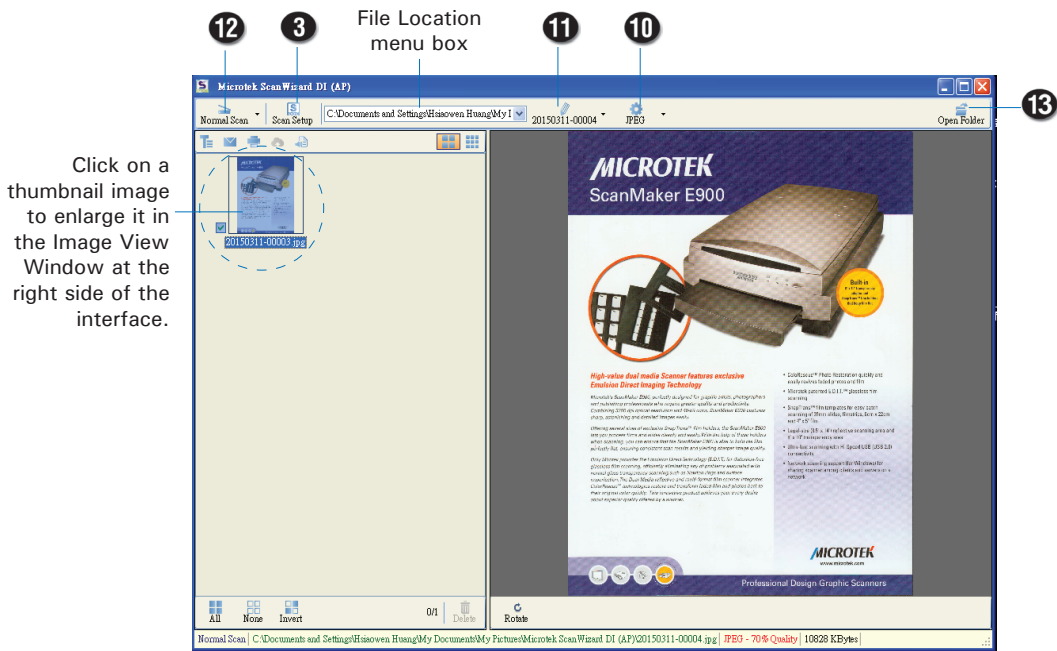
5. Click the *Show Preview Window* and *Show Setting Window* tabs in the Scan Setup interface to display other interfaces which are helpful for your scanning processing.
6. Click the *Preview* button to perform a preliminary view of the entire image. When done, a preview image appears in the Preview window.

7. Go to the “General” panel by clicking the *General* tab in the Settings window. Specify the settings for your requirements there.
 - a) Select the image type in the *Document Type* as your input image type.
 - Select *Photo* to scan color prints.
 - Select *Text* to scan text.
 - b) If necessary, check “Remove Blank Page” and “Remove Punch Hole” to enhance the quality of the scanned images.
8. If necessary, go to the “Image Process” panel by clicking the *Image Process* tab in the Settings window. Use the image correction tools presented there to enhance the image quality according to your specific requirements.
9. Click the *OK* button to close the Scan Setup interface and return to the Main interface of ScanWizard DI.
10. In the Main interface, click the *File Format* menu button to select a file format for the scanned images.
11. In the Main interface, click the *File Name* menu button to specify a file naming method for the scanned images.
12. In the Main interface, select and click the *Normal Scan* button to start scanning.

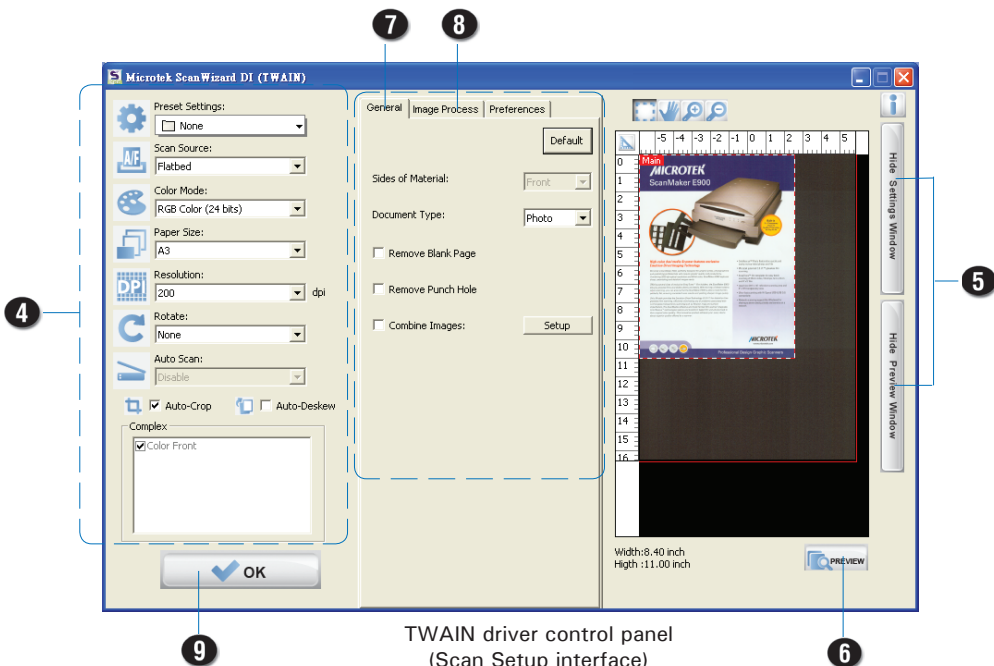
When done, the scanned images will be automatically saved into the folder defined in the File Location menu box. At the same time, the scanned images will be displayed in thumbnail sizes in the Thumbnail View window and labeled with the file name and file format specified earlier.
13. Click the *Open Folder* button to locate the scanned images if you want to view.



NOTE: For more details on other scanning scenarios applicable to your scanner, refer to the scanner’s User’s Manual in the Microtek Software CD/DVD.







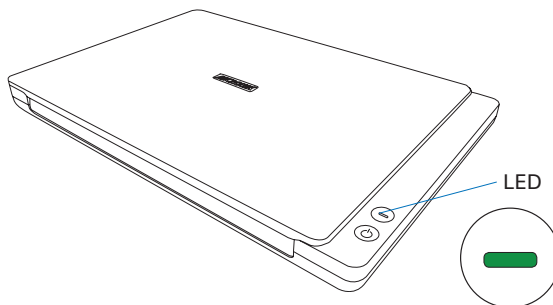
AP control panel (Main interface)

TWAIN driver control panel
(Scan Setup interface)

Problems?

The Multi-color LED on the button indicates the status of the scanner.

-  Off: Scanner is off
-  Green On: Ready to scan
-  Flashing Green: Scanning or sleeping
-  Red On: Error or USB disconnecting when powered up



First, make sure that you have followed Steps 1 to 3 as described in this guide (unpack, install, connect). Then if your problem is listed here, try the suggested solution.

1. No light comes on when the scanner is turned on.

Make sure your scanner is connected to your computer and plugged into a power source.

Make sure your scanner is detected by your computer.

2. The Add/Remove Hardware Wizard appears on your screen.

Click the "Cancel" button and close the ScanWizard DI Control Panel.

Disconnect the Hi-Speed USB cable from the back of your computer, and refer to the installation instructions in this document.

3. When trying to scan, an error message appears on your screen that reads, "Can't Find Scanners".

Make sure your scanner is connected to your computer and plugged in to a power source (see Step 3).

Uninstall and reinstall the ScanWizard DI software.

4. After clicking "Scan," a blank screen appears.

Uninstall and reinstall the ScanWizard DI software.

Do You Need Assistance?

Manuals

If you have additional questions and need further instruction or information, we provide electronic manuals for:

1. Using your scanner (scanner's User's Manual)
2. Using the ScanWizard DI

To access the electronic manuals: Insert the scanner's software CD/DVD into your computer's CD/DVD-ROM drive. Next, locate and click the "Manuals" option when the software installer window appears on your screen. Finally, select and click the title of the manual you wish to view.

Missing Items

If your package is missing items, please call the Microtek Customer Service Department.

Drivers & Software Upgrades

After you finish the installation of software, if you found that the installed drivers and software cannot run your product or your computer system properly later, please go to the Microtek Download Service site at www7.microtek.com.tw/service.php to download and install any updates you may require.

For additional information about Microtek products, please visit our website at www.microtek.com.

Power Adapter

Use only power supplies (AC/DC adapters) listed below:

Voltage	Manufacturer	Model No.
AC 100V to 240V	APD	DA-48M24

NOTE: Please make sure that the electrical outlet to where the scanner will be connected is nearby and readily accessible.

Copyright © 2015 Microtek. Microtek, ScanMaker, ArtixScan, ScanWizard and ColoRescue are trademarks or registered trademarks of Microtek International, Inc. All other trademarks or registered trademarks are the property of their respective holders. Specifications, software and hardware bundles are subject to change without notice. Delivery of technical support services subject to change without notice. Not responsible for typographical errors.

