

Start Here

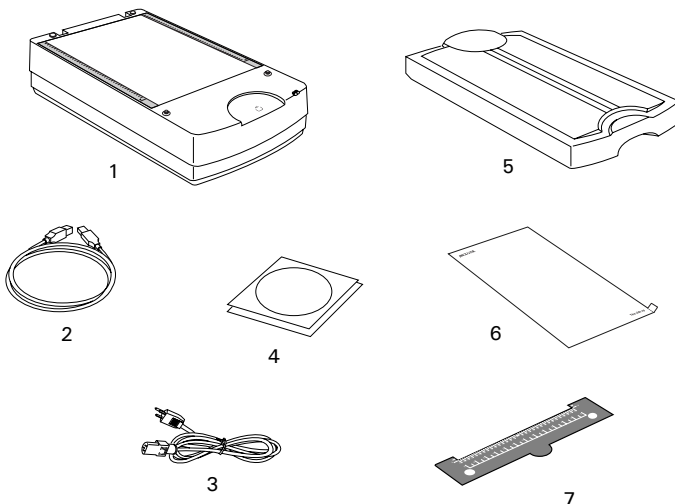
▼ Installing your Microtek Bio-6000 Gel Scanner

1

Unpack Contents

Unpack your scanner package and check for major components.

1. Bio-6000 (lower base)
2. USB Cable
3. Power Cord
4. Software CDs
5. TMA (Transparent Media Adapter)
6. Black Plate
7. U-shaped Ruler (Calibration Ruler)

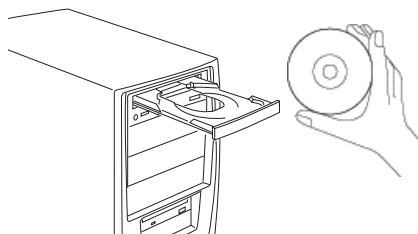


2

Install Software

Important: Do not remove the yellow sticker from your scanner until you are told to do so. You must install software before connecting your scanner.

Always close any open programs, and turn off Anti-virus utilities before installing software.



- A. Place the **Adobe CD-ROM** into the CD-ROM drive, and install the software. Skip this step if you have a newer version of Adobe Photoshop Elements already installed on your computer.
- B. Place the **Microtek software CD-ROM** into the CD-ROM drive, and follow the on-screen instructions to install the driver and software.

NOTE: If the Microtek Software Installer screen does not come up automatically, double-click the following in succession: "My Computer"; the CD-ROM icon; then cdsetup.exe to start the installer program.

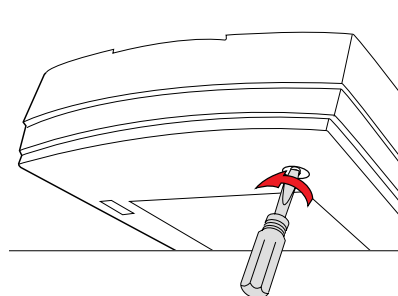
- C. Restart your computer at the end of all software installation.

3

Unlock Scanner

- A. Remove the yellow "Unlock" sticker from your scanner.
- B. With the scanner power off, tilt the front right corner of the scanner to see the locking screw at the bottom.
- C. Using a screwdriver, push and turn the locking screw counterclockwise to the unlock position.

When successfully unlocked, the screw will push out a little, protruding slightly from the bottom of the scanner.



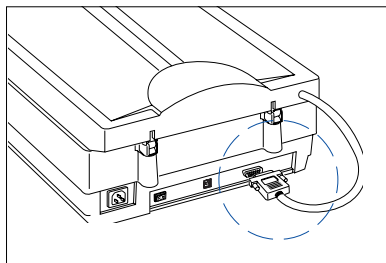
Unlocked

NOTE: To lock the scanner (for shipping and other purposes), push and turn the locking screw clockwise to the locked position.

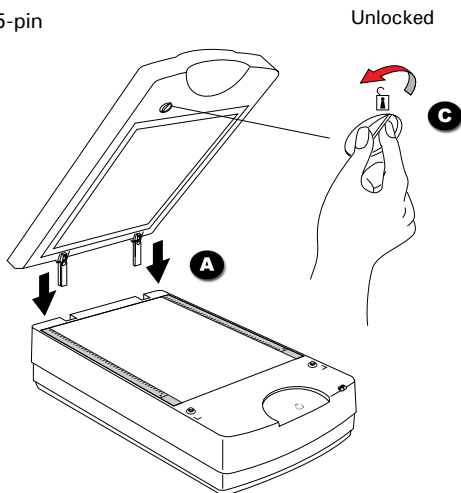
4

Install TMA

- A. Attach the TMA by sliding the posts at the rear of the TMA into the holes.
- B. Plug the connector of the TMA into the scanner's 15-pin accessory port.



B



Unlocked

- C. Unlock the TMA.
 - 1) Remove the yellow sticker "Unlock" from the TMA.
 - 2) Look for the locking knob at the base of the TMA.
 - 3) Turn the locking knob counterclockwise to the unlock position "🔓".

NOTE: To lock the TMA (for shipping and other purposes), turn the locking knob clockwise to the lock position "🔒".

5

Connect Scanner

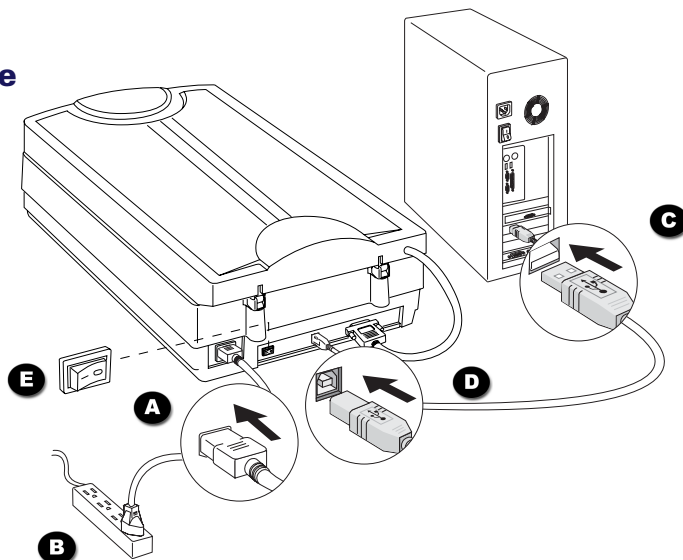
To the power cord

- A. Connect the power cord to the back of the scanner.
- B. Plug the power cord into a power source.

To the Hi-Speed USB cable

- C. Connect one end of the Hi-Speed USB cable to your computer.
- D. Connect the other end of the Hi-Speed USB cable to the scanner.
- E. Turn the Power switch at the back of the scanner to "On", and wait for the lights on the front panel to stop blinking and stay on steady.

The system will detect your scanner automatically.



Using the U-shaped Ruler (Calibration Ruler)

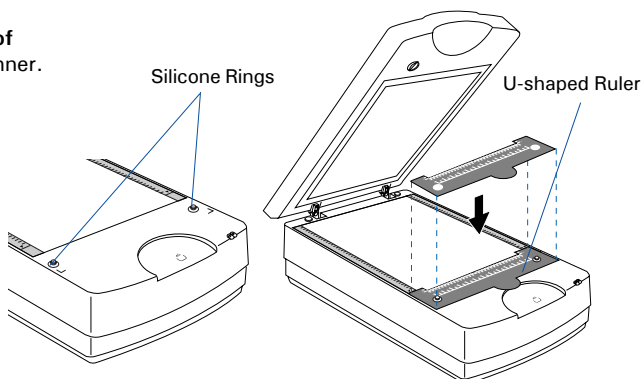
The U-shaped Ruler (Calibration Ruler) is designed for the use of the scanner calibration. Please take note that before putting the U-shaped Ruler on the scanner glass surface, make sure the scanner is turned off.

To use the U-shaped Ruler,

1. Peel the protective film from the **back side of the ruler** before using it to calibrate the scanner.



2. Then, put the ruler facing up on the scanner glass surface and hook the ruler onto the raised Silicone Rings located on the both sides of the scanner surface, making sure that they have been oriented correctly.



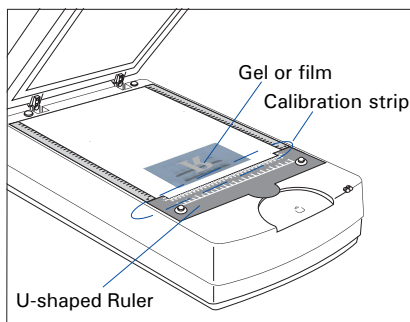
3. Finally, turn on the scanner power.

Position the Scan Material

A. Position Electrophoresis Gels/Film or Transparent Film

To scan the electrophoresis gels/film (such as 1D/2D gels, SDS-PAGE, western/northern/southern blots, or membranes) and transparent film (such as slide, positive film, or reversal film), you have to scan gels or film together with the U-shaped Ruler (Calibration Ruler).

To scan with U-shaped Ruler, refer to the “Using the U-shaped Ruler” section in this guide to place the U-shaped Ruler first, and then place and center the gel or film on the scanner glass surface. Make sure to keep the area of the calibration strip clear.



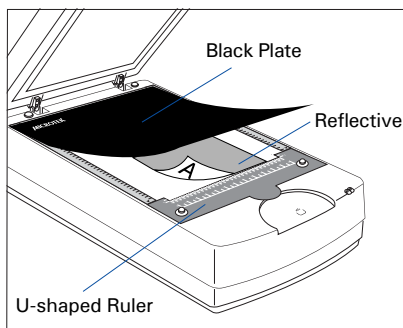
B. Position Reflective Materials

To scan reflective materials (such as photo, prints, dissertations or papers), you have to scan the reflective original together with the U-shaped Ruler (Calibration Ruler) and Black Plate.

1. Place the reflective original to be scanned **facing down** on the scanner glass surface, with the top end of it toward the front of the scanner.
2. Peel the protective film from the **Black Plate**.

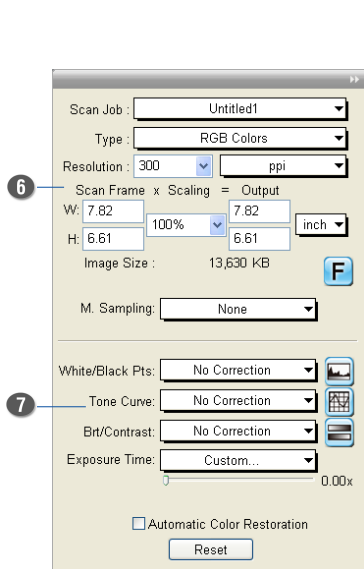


3. Then, put the **Black Plate** on the top of the reflective to cover it, with the side of the Black Plate that reads “This side up” facing up.

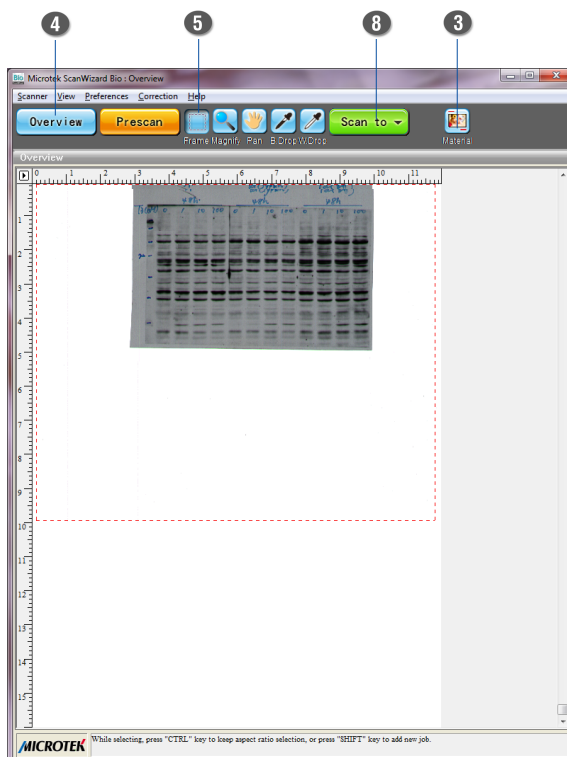


Scanning Electrophoresis Gels or Film

1. Position the gel or film on the scanner glass surface, as detailed in the “Position Electrophoresis Gels/ Film or Transparent Film” section of this guide.
2. Click the **ScanWizard Bio** icon on the desktop to launch ScanWizard Bio.
3. In the Preview window of ScanWizard Bio, choose **Transmissive** from the Scan Material menu.
4. Click the **Overview** button in the Preview window to see a preliminary scan of the image.
5. Select the **Scan Frame** tool, and choose the area to be scanned by sizing the marquee around the targeted area.
6. Specify your scanning requirements in the Settings window. Choose the desired image type and resolution, and adjust the scan frame settings if necessary.
7. Adjust image quality if necessary, using the Advanced Image Correction tools.
8. Click the **Scan to** (or “Scan”) button in the Preview window or the scanner unit to start scanning.



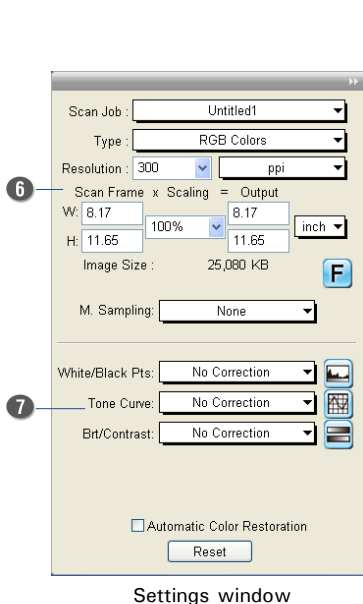
Settings window



Preview window







Scanning Reflective Materials (e.g., photos or prints)

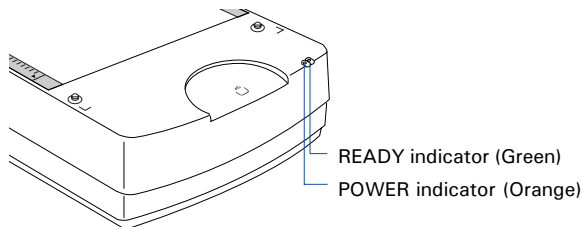
1. Position the reflective to be scanned face down on the scanner glass surface, with the top of it toward the front of the scanner, as detailed in the "Position Reflective Materials" section of this guide.
2. Click the **ScanWizard Bio** icon on the desktop to launch ScanWizard Bio.
3. In the Preview window of ScanWizard Bio, choose **Reflective** from the Scan Material menu.
4. Click the **Overview** button in the Preview window to see a preliminary scan of the image.
5. Select the **Scan Frame** tool, and choose the area to be scanned by sizing the marquee around the targeted area.
6. Specify your scanning requirements in the Settings window. Choose the desired image type and resolution, and adjust the scan frame settings if necessary.
7. Adjust image quality if necessary, using the Advanced Image Correction tools.
8. Click the **Scan to** (or "Scan") button in the Preview window or the scanner unit to start scanning.



Problems?

The green LED on the front panel indicates the status of the scanner. The orange LED beside it stands for power and should always stay on steady when the scanner is on.

		All On - Ready to scan
		Flashing Green - Scanning
		All Off - Scanner is off



First, make sure that you have followed installation steps 1 through 5. If your problem is listed here, try the suggested solution.

1. No light comes on when the scanner is turned on.

Make sure your scanner is connected to your computer and plugged into a power source.

2. Add/Remove Hardware Wizard appears on your screen.

Click the "Cancel" button and close the Control Panel. Disconnect the USB cable from the back of your computer, and refer to the installation instructions in this guide.

3. When trying to scan, an error message appears on your screen that reads, "Can't Find Scanners".

Make sure your scanner is unlocked (see Step 3 and Step 4).

Make sure your scanner is connected to your computer and plugged into a power source (see Step 5).

Uninstall and reinstall the ScanWizard Bio software.

4. After clicking scan, a blank screen appears.

Make sure your scanner is unlocked (see Step 3 and Step 4).

Uninstall and reinstall the ScanWizard Bio software.

5. Having trouble scanning electrophoresis gels/film or transparent film.

Make sure the TMA is properly installed, with its connector securely connected to the scanner's 15-pin accessory port (see Step 4).

Make sure you place the gel or film on the scan bed properly. Do not block the calibration area (as indicated in the "Position Electrophoresis Gels/Film or Transparent Film" section of this guide).

From the Preview window of ScanWizard Bio, choose **Transmissive** from the Scan Material menu.

Uninstall and reinstall the ScanWizard Bio software.

6. Having trouble scanning reflectives?

Make sure the TMA is properly installed, with its connector securely connected to the scanner's 15-pin accessory port (see Step 4).

Make sure you place the reflective original on the scan bed properly.

From the Preview window of ScanWizard Bio, choose **Reflective** from the Scan Material menu.

Uninstall and reinstall the ScanWizard Bio software.

Do You Need Assistance?

Manuals

If you have additional questions and need further instruction or information, we provide electronic manuals for:

1. Using your Bio-6000 User Guide
2. Using the ScanWizard Bio scanning software
3. Using the bundled third-party software

To access the electronic manuals: Insert the scanner's software CD-ROM into your computer's CD-ROM drive. Next, locate and click the "Manuals" option when the software installer window appears on your screen. Finally, select and click the title of the manual you wish to view.

Missing Items

If your package is missing items, please call Microtek Customer Service Department.

Drivers & Software Upgrades

After you finish the installation of software, if you found that the installed drivers and software cannot run your product or your computer system properly later, please go to the Microtek **Download Service** site at www7.microtek.com.tw/service.php to download and install any updates you may require.

For additional information about Microtek products, please visit our website at www.microtek.com.