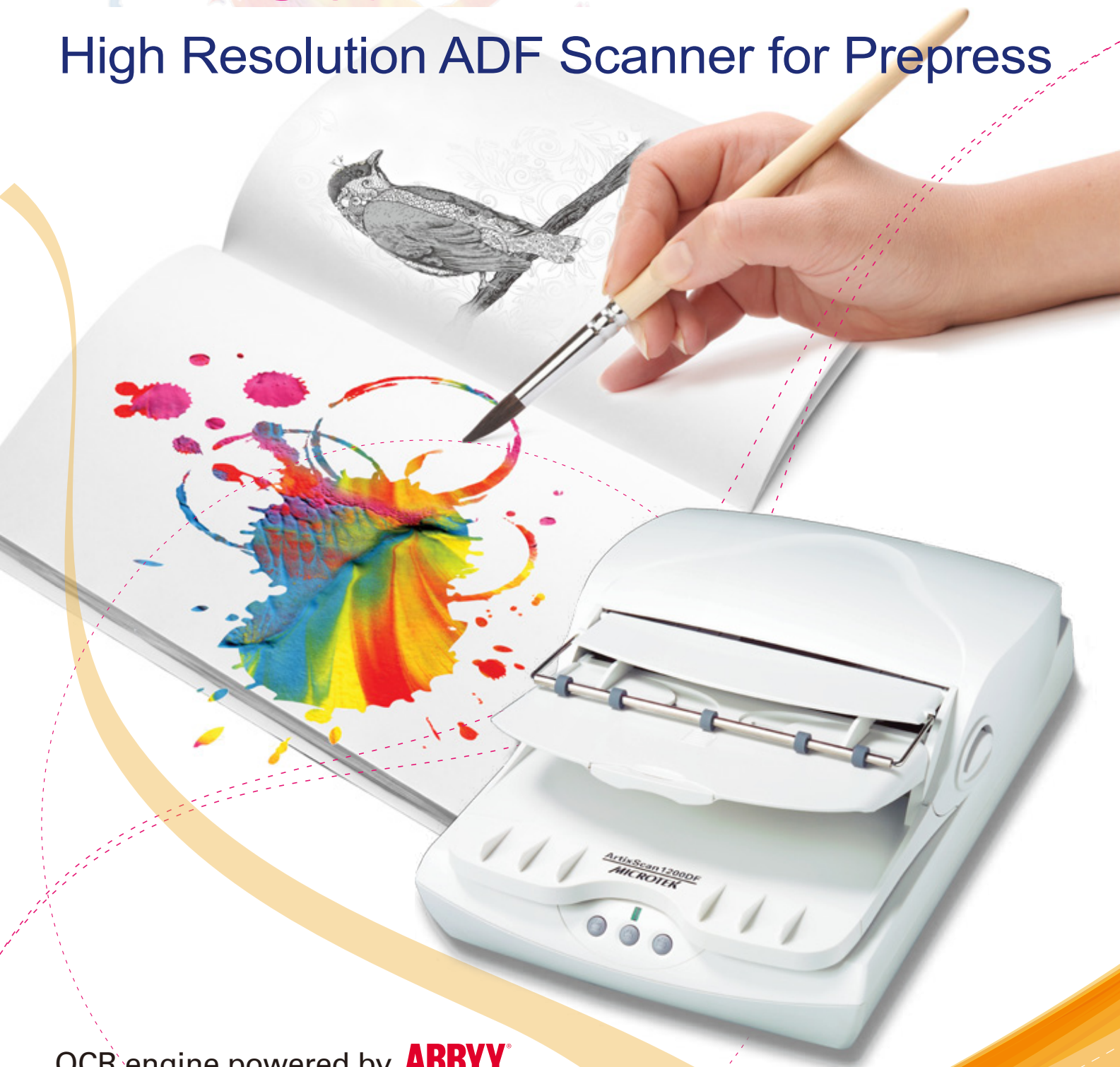


# ArtixScan 1200DF

High Resolution ADF Scanner for Prepress



OCR engine powered by **ABBYY**  
ABBYY FineReader Sprint OCR Included

CCD

1200  
DPI

Flatbed  
+  
ADF

Smart  
Duplex

15ppm  
200dpi

50  
Pages  
(ADF)

3  
Buttons

# ArtixScan 1200DF

## Flatbed with ADF design for all types of prints

The ArtixScan 1200DF from Microtek is tailored to meet the high quality standard of publishers with capability of scan large amount of paper efficiently. The ArtixScan 1200DF comes with a 1200-dpi optical resolution CCD, ADF (Auto-Document Feeder), and smart duplex scan software function. The ArtixScan 1200DF simplifies the scanning task and meets the high quality requirements of pre-press industry.

### ADF Scan with 1200-dpi Resolution

The high performance ADF with true 1200-dpi optical resolution catches all the details and color fidelity presenting in the originals and delivers the document sharpness needed in all the enterprise, office and school projects. It is useful for turning paper documents into e-papers and managing them efficiently.



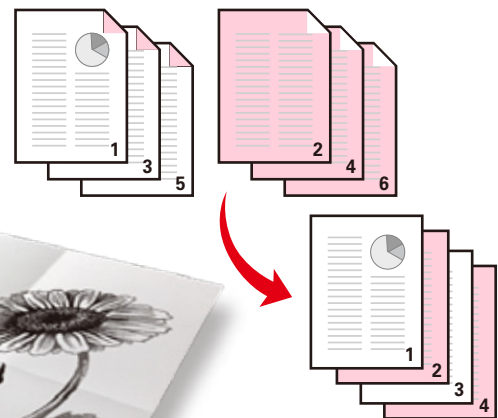
600-dpi



1200-dpi

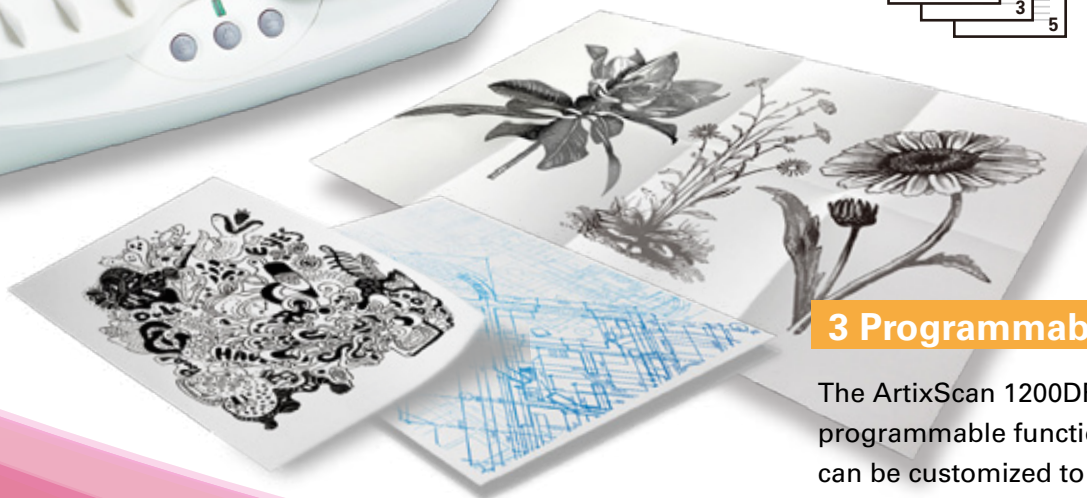
### Smart Duplex Scanning Support

Smart Duplex Scanning is a feature of ArtixScan 1200DF that enables a scanner to scan double sides of a document by using a simple software command. It efficiently upgrades a simplex scanner to a duplex scanner, saving a lot of effort and money, reducing your fatigue and doubling your productivity.



### 3 Programmable Function Buttons

The ArtixScan 1200DF is equipped with three programmable function buttons (F1, F2, and F3) that can be customized to automate a number of predefined operations, such as scanning to a file, sending an image to your printer, scanning for OCR, and delivering an image to your e-mail editor, etc.



# ScanWizard DI

Microtek ScanWizard DI is Microtek's scanning software developed exclusively for Document Imaging (DI) scanners. Supporting TWAIN protocol and featuring multiple scanning frames with an all-in-one control panel, ScanWizard DI is easy to use, yet powerful.

## Auto Document Rotation

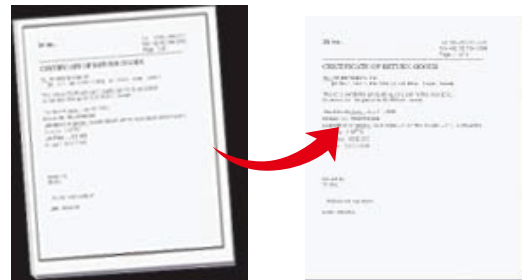


Before

After

The Auto Document Rotation function enables the scanner to rotate each saved image into a readable direction automatically based on specified OCR language. Users do not need to rotate the document manually when scanning, saving time and energy.

## Auto-crop and Auto-deskew



Before

After

In order to save people's vigor, the Auto-crop and Auto-deskew function enables Microtek's scanners automatically detect the size of the image and then crop the frame to fit the image. At the same time, they can also remove the unwanted black borders.

## Descreen

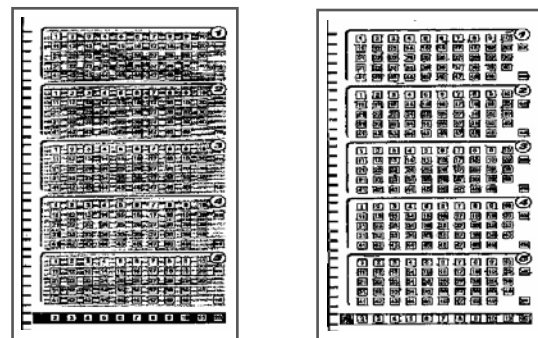


Before

After

The Descreen function can eliminate the moiré patterns when you scan a screened original, such as pictures from the newspapers or magazines. Hence, users can get pristine and clear scanned images.

## Smart Threshold



Before

After

The Smart Threshold function enables Microtek's scanners to define the best level of a threshold used in high-contrast and black-and-white images automatically, improving the clearance and readability of black-and-white documents.



## Barcode Separator

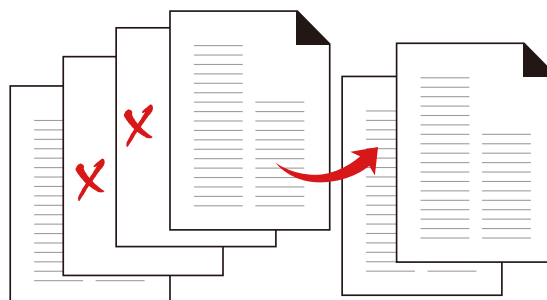


Before

After

The Barcode Separator function can recognize the barcode number on an invoice or a receipt and then lets the scanned image saved in a file or directory using the barcode number. It helps office and factory users to save time on categorizing piles of invoices or receipts.

## Remove Blank Page



Before

After

The Remove Blank Page function can remove the blank pages, helping users to avoid examining a pile of documents manually after the scanning is done. Therefore, users can scan documents in more comfortable and satisfactory ways, no matter how massive of documents are.

## Specifications

### Scanner Type

Flatbed with ADF scanner

### Image Sensor

CCD

### Color Modes

Input: 48-bit color, 24-bit grayscale, 1-bit b&w

Output: 24-bit color, 8-bit grayscale, 1-bit b&w

### Scanning Method

Color, grayscale, and black-and-white in a single scanning pass

### Optical Resolution

Flatbed: 1200 x 2400 dpi

ADF: 1200 x 2400 dpi

### Scanning Speed

20 ppm, at 200 dpi, A4/line art

20 ppm, at 200 dpi, A4/grayscale

15 ppm, at 200 dpi, A4/color

### Scanning Area

Flatbed : 8.5" x 11.7" / 216 mm x 297 mm

ADF: 8.5" x 25" / 216 mm x 635 mm

### ADF Capacity

50 sheets

### Paper Basis Weight

10 to 30 lbs.

### Interface

Hi-Speed USB 2.0

### Dimensions (L x W x H)

17" x 11.4" x 5.7" / 432 mm x 290 mm x 145 mm

### Weight

10.6 lbs. / 4.8 kg

### Environment

Operating temperature: 50° to 95°F / 10° to 35°C

Relative humidity: 20% to 85%

## System Requirements

### PC and compatibles

- CD-ROM drive (for installing software)
- Color display with 24-bit color output capability
- 512 MB RAM or more
- Pentium IV PC or higher with USB 2.0 port
- Microsoft Windows XP, Vista, or 7

### Included Software

- Microtek ScanWizard DI
- ABBYY FineReader Sprint OCR
- InterVideo MediaOne Gallery
- Adobe Acrobat Reader



\* For more details on product, please contact your local Microtek sales or dealers.

## MICROTEK INTERNATIONAL, INC.

No. 6 Industry East Road 3, Science-Based Industrial Park, Hsinchu 300, Taiwan

Tel: 886-3-577-2155 Fax: 886-3-577-2598 <http://www.microtek.com>

© 2011 Microtek. Microtek, ScanMaker, AnyScan and ScanWizard are trademarks or registered trademarks of Microtek International, Inc. All other brands, product names and logos herein are trademarks or registered trademarks of their respective holders. Specifications, software bundles and accessories are subject to change without notice. Delivery of technical support services subject to change without notice. Not responsible for typographical errors. © 2011 Ingram Publishing. 20110608

**MICROTEK**  
SCAN THE WORLD