

# Bio-1000F Test Reference

**MICROTEK**  
SCAN THE WORLD

- ▶ Stain : GreenView™ Plus DNA Gel Stain
- ▶ Manufacturer : GeneCopoeia, Inc.









## DNA Electrophoresis

### Precast Gel

### Post-Staining

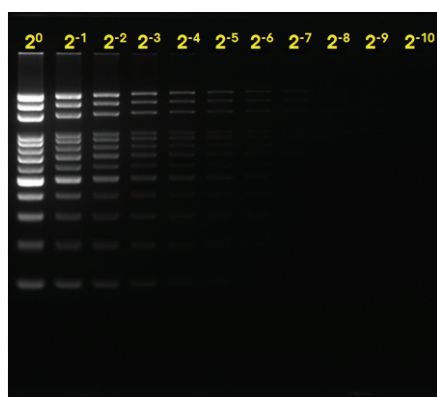
### Protocol

-  3  $\mu$ l GreenView™ Plus DNA Gel Stain in 60 ml 2% TAE agarose gel.
-  5  $\mu$ l of Bio100™ Mass DNA Ladder (Protech Technology Enterprise Co., Ltd.) was loaded into line 1 ( $2^0$ ). Twofold serial dilutions of the ladder were prepared in 1x DNA loading dye and loaded into lanes 2 to 11 ( $2^{-1}$  to  $2^{-10}$ ).
-  Following electrophoresis (voltage: 50 V), the images were caught by Bio-1000F with different exposure times.

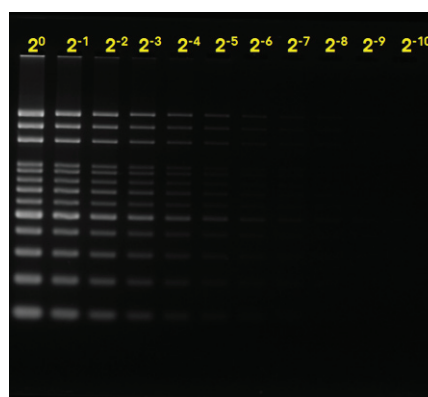
-  5  $\mu$ l of Bio100™ Mass DNA Ladder (Protech Technology Enterprise Co., Ltd.) was loaded into line 1 ( $2^0$ ). Twofold serial dilutions of the ladder were prepared in 1x DNA loading dye and loaded into lanes 2 to 11 ( $2^{-1}$  to  $2^{-10}$ ).
-  Following electrophoresis (voltage: 50V), the gel were immersed into 1x TAE buffer with 1/20,000 GreenView™ Plus DNA Gel Stain for 30 minutes at 30°C.
-  The images were caught by Bio-1000F with different exposure times.

### Result

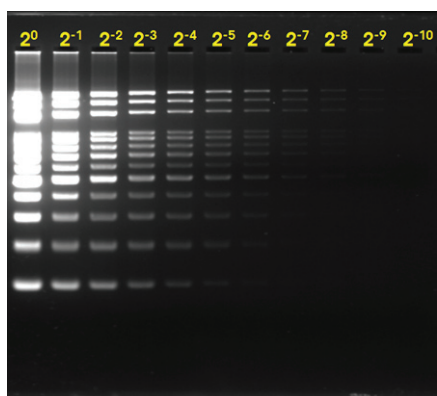
x1  
Exposure  
Time →



x1  
Exposure  
← Time



x4  
Exposure  
Time →



x4  
Exposure  
← Time

