

LS-3700

Multi-Purpose A1⁺ Flatbed Scanner

- Large 37" x 25" scanning area
- Flatbed design for a wide variety of documents and objects
- Color CCD with true 600 dpi optical resolution
- Two-way LED light source decreases the shadows of images
- One CCD design, no image stitching
- 10 mm depth of field for scanning uneven objects
- Convenient casters for easy movement and stationary
- Includes easy-to-use ScanWizard Doc software



LS-3700

Microtek's LS-3700 is a flat and large-format scanner which supports a scanning area up to 37" x 25", larger than DIN A1 and perfect for scanning large documents, such as color posters, architectural drawings, industrial and construction blueprints. Moreover, it is also fit to scan clothes, textiles, hanging charts, bounded books, fragile materials, fine arts, and other exquisite originals. The LS-3700 has a color CCD with an optical resolution of 600 dpi, ensuring superior imaging performance. The two-way LED light source decreases shadows caused by uneven surfaces of the scanned object and makes the scanner ready to start immediately when it is powered on, requiring zero warm-up time. Users only need to put originals to be scanned on the glass surface and then they can easily get clear images.

Flatbed Design Fits Different Scanning Requirements

With a flatbed design, LS-3700 is perfect for scanning large or thick papers, fragile materials, clothes, textiles, hanging charts, bounded books and other originals.

Convenient Casters for Easy Movement and Stationary

Equipped with four leveling casters at bottom, LS-3700 can be moved easily indoors. They are also helpful for the installation or adjustment of the machine. Moreover, they bring users conveniences when scanning special objects or cleaning the machine.

Industrial Transmission Mechanism

LS-3700 adopts an industrial transmission mechanism and sets the belt at middle; thus, calibrators can be moved smoothly, reducing scanning noise and improving scanning quality.

10 mm Depth of Field

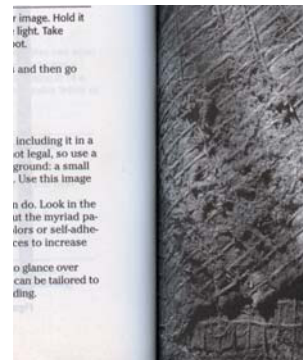
The depth of field (DOF) for LS-3700 is up to 10 mm, which is convenient for users to scan heavy or thick objects and still keeps scanned images vivid and clear.

Two-way LED Light Source Decreases the Shadows of Images

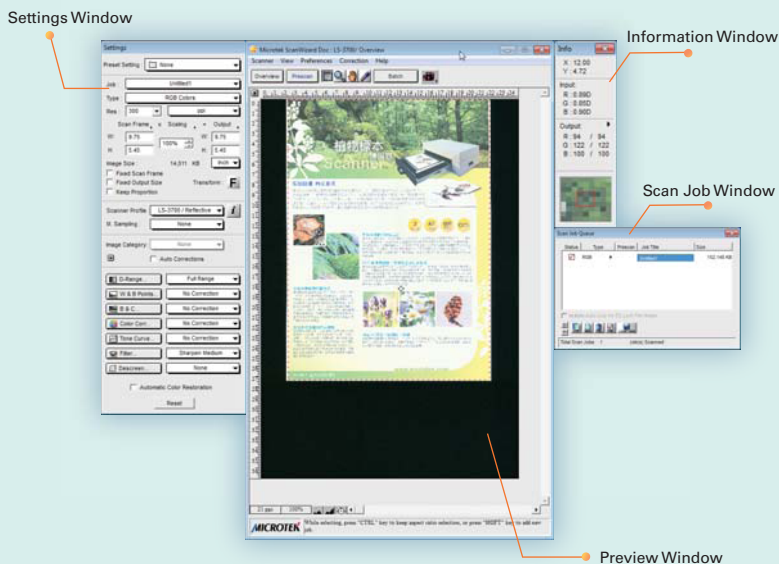
Equipped with the two-way LED as its light source, LS-3700 can efficiently decrease shadows caused by uneven surfaces of the scanned object and therefore ensures clearness and lifelikeness of scanned images. When powered on, there is no warm-up time required for LS-3700 and it can start scanning immediately, which fits to the popular ecological trend.



One-way LED light source - more shadows



Two-way LED light source - fewer shadows



ScanWizard Doc

Exclusively for Large Format Document Scanning Full Function and Easy to Use

ScanWizard Doc is image-capturing software exclusively designed by Microtek for the image professionals using Microtek's image scanners. It is provided with series of advanced functions and tools, providing instant and complete helps to users who can therefore control the scanner easily and get the best image results.

- CMS (Color Management System)
- Auto Dynamic Range
- White/Black Points correction
- Brightness and Contrast controls
- Tone Curve adjustments
- Filter effects
- Descreen
- Auto Color Restoration
- Invert, and more

Specifications

Scanner Type	Large Format Flatbed scanner
Image Sensor	Color Lined CCD
Optical Resolution	600 dpi
Light Source	LED
Color Depth	48-bit
Color Mode	24-bit color, 8-bit grayscale
Scanning Area	635 mm x 940 mm (25" x 37")
Scanning Speed	45 sec @ 300 dpi, A1 color
File Output Format	TIFF, BMP, JPEG, JPEG2000, PDF, etc.
Interface	Hi-Speed USB 2.0

Dimensions (LxWxH)	133 cm x 87 cm x 72 cm (without cover)
Weight	approx. 170 kg.
Voltage	AC 100V - 240V, 47 - 63 Hz, Max. 1.7A (Input)
Power Consumption	375 W
Environment	Operating temperature: 50° - 95°F (10° - 35°C) Relative humidity: 20% - 85% RH

System Requirements

- CD-ROM drive (for installing software)
- Color display with 24-bit color output capability
- 8 GB RAM or more
- Intel Core i5 Processor at 3.0 GHz PC or higher with Hi-speed USB (USB 2.0) port
- Windows 7 / 8 / 10 (x64 & x86)

* For more details on product, please contact your local Microtek sales or dealers.

MICROTEK INTERNATIONAL, INC.

No. 6 Industry East Road 3, Science-Based Industrial Park, Hsinchu 30075, Taiwan
Tel: +886-3-577-2155 Fax: +886-3-577-2598 <http://www.microtek.com>

