

MICROTEK

ScanMaker 5800

5.76MPi

MegaPixel per square inch

5.76 MegaPixel (5,760,000 effective pixels) in every square inch for the highest quality digital images!

To learn more about MPi, please visit
www.microtekusa.com/megapixel



High-Speed, High-Quality 4800 x 2400 dpi Scanning

The ScanMaker 5800 represents the new price-performance standard in 48-bit, 5.76MPi2 (5.76 MegaPixel per square inch) CCD resolution desktop scanners, giving you the quality you really need for all your design and publishing projects. This high-performance scanner also has Hi-Speed USB 2.0 connectivity for scanning at incredibly fast speeds. It is introduced for those who need a scanner that delivers high-resolution, fast scanning speeds, easy-to-use and great image quality at an affordable price.

With its high resolution and color depth, hassle-free USB setup and push-button ease of use, ScanMaker 5800 is one of the most roused scanners on the market. All the software you need is in the box, including powerful scanning, image editing, photo restoration and OCR tools.

- 7 Smart-Touch buttons are convenient and easy-to-use
- Microtek EDGE™ Design for an ultra-slim CCD scanner
- New high-speed USB 2.0 connection is 40 times faster... and works with any USB port!
- High resolution for great color copies and poster-sized enlargements of your photos
- Create slide shows of family photos that you can watch with most DVD players (PC)
- 4-Up™ Scanning - scan up to 4 photos at a time!
- Over 34 years of digital imaging excellence



MICROTEK
SCAN THE WORLD

ScanMaker 5800

Microtek ScanWizard® 5 Makes Scanning Easier

- Choose between Standard and Advanced scanning controls to suit your level of expertise.
- Follow-me tutorial provided to guide first-timers step-by-step through the scanning process.
- Automatic transfer of scanned images to printer, email, web browser or image editing software.
- Batch scanning allows automatic scanning and saving of multiple images for high productivity.
- Advanced Image Correction tools are included for enhancing or customizing your scanned images.
- Preview as you go (in real-time) for image transformations and corrections.
- Support for Internet sRGB standard color ensures consistent results anywhere on the net.

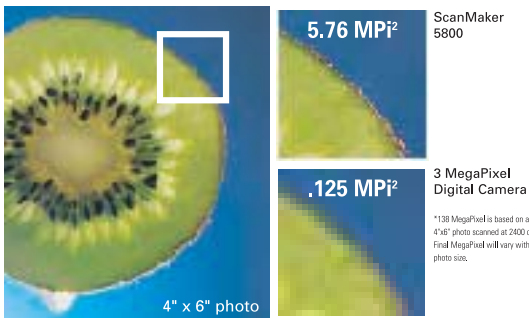
5.76MPi

MegaPixel per square Inch

More MegaPixels, More Value

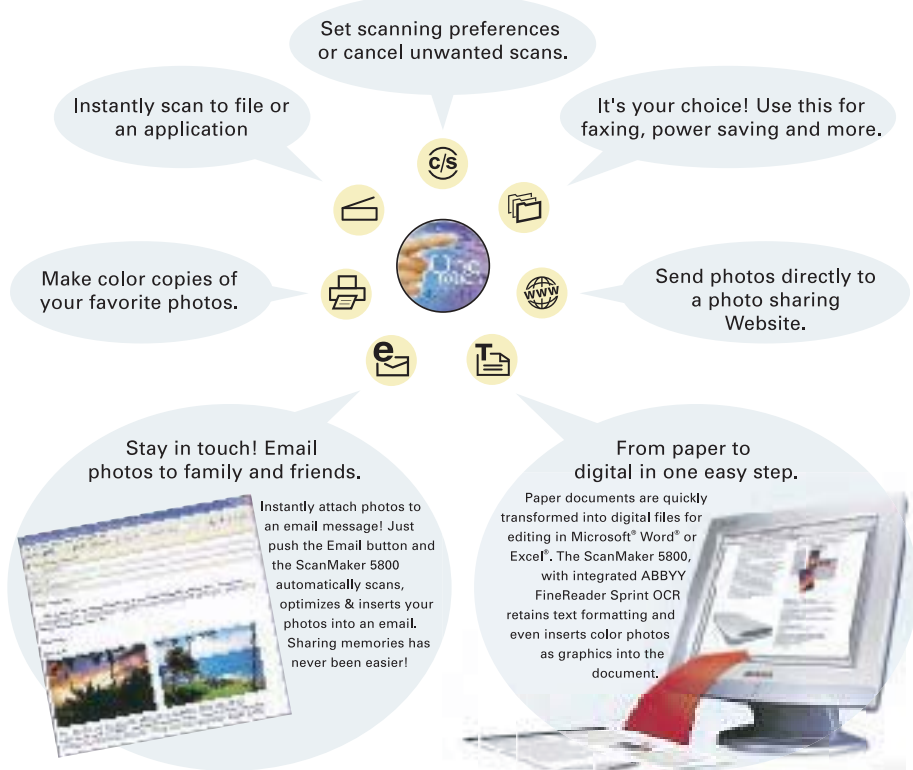
	Photo Size	MegaPixel/square inch	Total MegaPixel
Digital Camera	4" x 6" photo	0.125 MegaPixel/inch ²	3 MegaPixel
ScanMaker 5800	4" x 6" photo	5.76 MegaPixel/inch ² <small>46X MORE</small>	138 MegaPixel*

While digital cameras are great for people on the go, scanners offer versatility, quality and value. The ScanMaker 5800 offers up to 46 times more MegaPixels for more details, colors and memories, which make it easy when you want to enlarge your photo, create prints and share them.



Smart Scanning

7 customizable Smart-Touch buttons
let you perform everyday tasks with ease.



Specifications

Scanner Type
Desktop color flatbed scanner

Image Sensor
CCD

Resolution
Optical: 2400 x 4800 dpi

Light Source
CCFL

Scanning Modes
Color, grayscale and black & white in a single pass
48-bit color/16-bit grayscale/1-bit b&w

Scanning Area
8.5" x 11.7" (216 mm x 297 mm)

Connectivity
Hi-Speed USB (USB 2.0)

Dimensions (LxWxH)
19.0" x 11.5" x 2.3"
(483 mm x 294 mm x 60 mm)

Weight
5.7 lbs. (2.6 kg)

Environment
Operating Temperature:
50°F to 104°F (10°C to 40°C)
Relative Humidity: 20% to 85%

Accessory
LightLid 35 (Optional)

System Requirements

- CD/DVD-ROM drive (for installing software)
- Color display with 24-bit color output capability
- 512 MB RAM or more
- Pentium IV PC or higher with USB 2.0 port; Intel-based Mac computer with built-in USB port
- Windows 2000 / XP / Vista / Windows 7 / Windows 8 / Windows 10 ; Mac OS X 10.3 or later

Included Software

- Microtek® ScanWizard™ 5 (PC/Mac)
- ABBYY FineReader® Sprint OCR (PC/Mac)
- InterVideo MediaOne Gallery™ (PC)
- Adobe® Acrobat® Reader (PC/Mac)

For more details on product, please contact your local Microtek sales or dealers.

Get The Microtek EDGE

With the new Microtek EDGE Design you still get the quality and ease-of-use that we're known for, but now you get it in a 25% smaller scanner without sacrificing quality! To achieve a slim profile and a small footprint, some scanners use CIS sensors, commonly found in fax machines. Microtek took the high-quality CCD technology and using EDGE Design made it smaller, giving you more desk space, and keeping the image quality that you need. Here's the difference:

	CCD (Microtek)	CIS
3D Objects	Yes	Poor
Transparencies (Film)	Yes, with adapter	No
Books and Bound Documents	Yes	Poor

MICROTEK INTERNATIONAL, INC.

No. 6 Industry East Road 3, Science-Based Industrial Park,
Hsinchu 30075, Taiwan
Tel: +886-3-577-2155
Fax: +886-3-577-2598
<http://www.microtek.com>