

Start Here

PRO

English

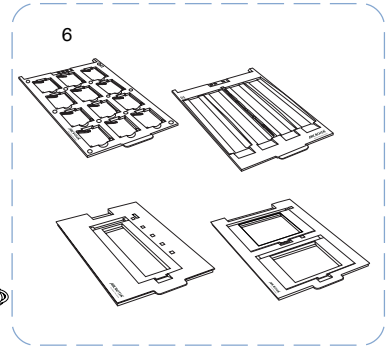
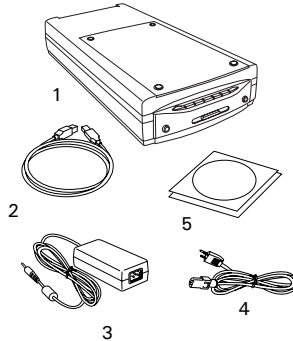
▼ Installing your Microtek ScanMaker i800 Plus

Step 1

Unpack Contents

Unpack your scanner package and check for major components.

1. ScanMaker i800 Plus
2. USB cable
3. Power adapter
4. Power cord
5. Software CDs/DVDs
6. EZ-Lock™ Film Holders



Step 2

Install Software

Important: Do not remove the yellow stickers from your scanner until you are told to do so. You must install software before connecting your scanner.

Always close any open programs, and turn off Anti-virus utilities before installing software.

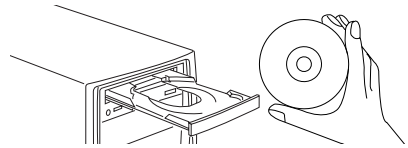
PC:

- A. Place the **Adobe DVD** into a drive, and install the software. Skip this step if you have a newer version of Photoshop Elements already installed on your computer.
- B. Place the **Microtek Software CD/DVD** into a drive, and follow the on-screen instructions to install the driver and software.
- C. Insert the **IT8 Calibration Data CD** for the Microtek Scanner ICC Profiler (MSP) program into your CD/DVD-ROM drive, and follow the on-screen instructions for installation.
- D. Restart your computer at the end of all software installation.

MAC:

- A. Place the **Adobe DVD** into a drive, and install the software. Skip this step if you have a newer version of Photoshop Elements already installed on your computer.
- B. Place the **Microtek Software CD/DVD** into a drive, and double-click the **ScanWizard Pro** installer icon to install ScanWizard Pro first. Next, double-click the **MSP** installer icon to install the Microtek Scanner ICC Profiler (MSP) program. Finally, insert the **IT8 Calibration Data CD**, and double-click the IT8 installer icon to complete MSP installation.
- C. Install the remaining software components, then restart your computer at the end of all software installation.

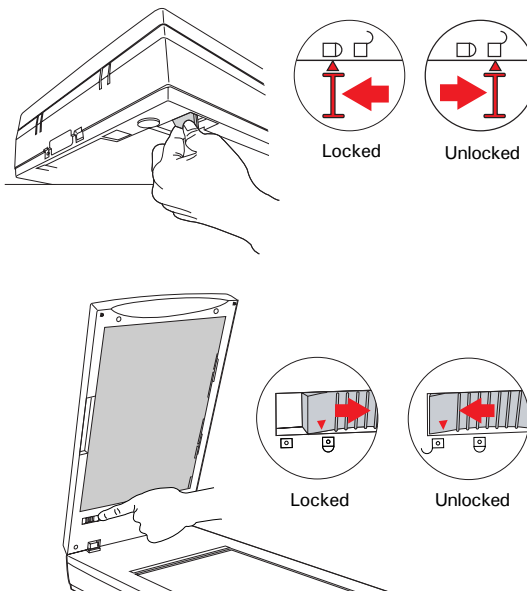
NOTE: After rebooting your Macintosh, the Microtek software will attempt to locate your scanner on the system. Since this is your first install and you have not yet connected the scanner, simply ignore the message that appears and proceed to the next step.



Step 3

Unlock Scanner

- Remove the yellow "Step 3" sticker from your scanner.
- With the scanner power off, tilt the back left corner of the scanner to see the locking switch at the bottom.
- Push the locking switch to the position (as indicated by the graphic on the right), with the icon on the lock showing as "unlocked".
- Raise the scanner lid (TMA), and look for the locking switch at the base of the TMA.
- Push the locking switch to the position (as indicated by the graphic on the right), with the icon on the lock showing as "unlocked".



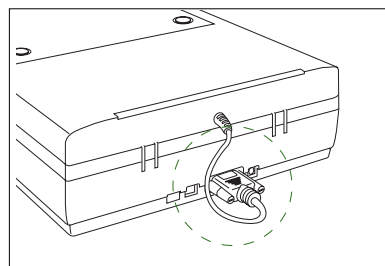
NOTE: To lock the scanner (for shipping and other reasons), refer to the ScanMaker i800 Plus Supplement.

Step 4

Connect Scanner

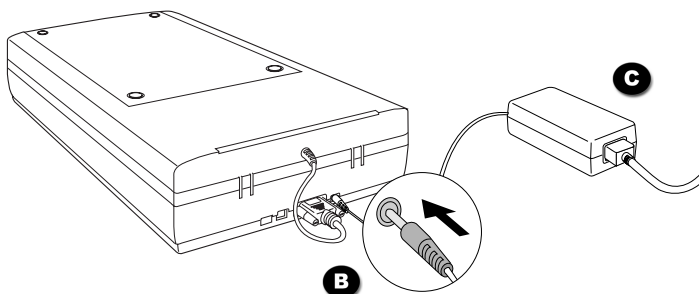
To the digitizer lid

Make sure the scanner lid (TMA) is properly installed, with its connector securely connected to the scanner's 15-pin accessory port.



To the power adapter

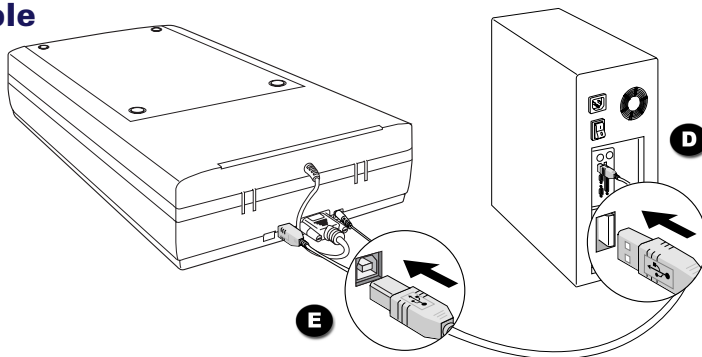
- Remove the yellow "Step 4" sticker from your scanner.
- Connect the power adapter to the back of the scanner.
- Plug one end of the power cord into the socket of the power adapter, and plug the other end into a wall outlet or other power source.



Step 4: Connect Scanner (cont.)

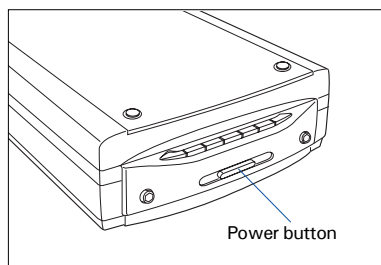
To the Hi-Speed USB cable

- D. Connect one end of the Hi-Speed USB cable to your computer.
- E. Connect the other end of the Hi-Speed cable to the scanner's USB port.



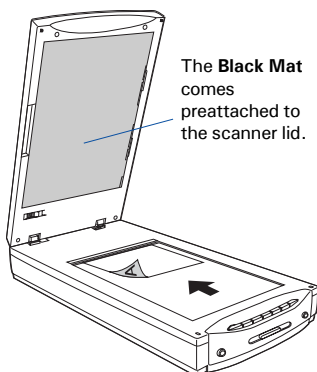
- F. Press the power button at the front panel of your scanner, and wait for the LEDs to stop blinking and stay on steady.

The scanner will be detected by your system automatically.

**Position the Scan Material****Position Reflective Materials**

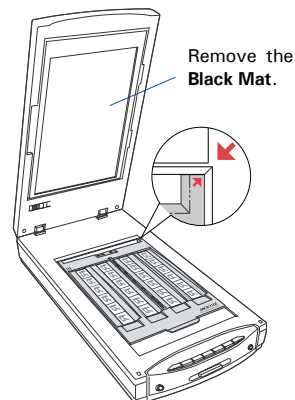
To scan reflective materials such as photos: Raise the scanner lid, and place the photo to be scanned face down on the scanner glass surface. Position the top end of the photo towards the **back** of the scanner. Then, close the lid and prepare to scan.

NOTE: Make sure the **Black Mat** is attached on the scanner lid, and close the scanner lid before you launch ScanWizard Pro.

**Position Transparencies**

To scan transparencies such as 35mm slides, 35mm filmstrips, 4" x 5" film, or medium format up to 6 x 17-cm panoramic film: Use the EZ-Lock™ Film Holders or Film Alignment Ruler included with your ScanMaker i800 Plus package.

See the "Using the TMA" section in next page of this guide to position the transparent films; or refer to the ScanMaker i800 Plus Supplement for details.

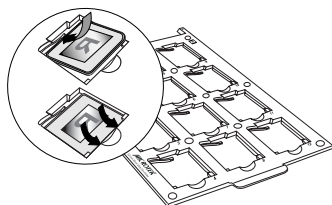


Using the TMA

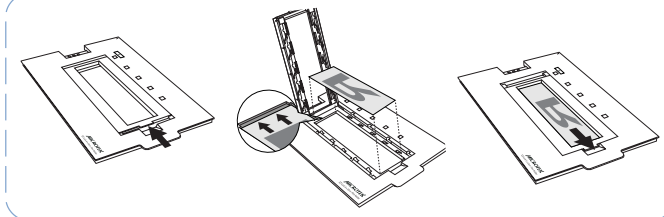
A. To load film:

1. Load the film inside the EZ-Lock™ Film Holder, with the film's shiny base facing down.

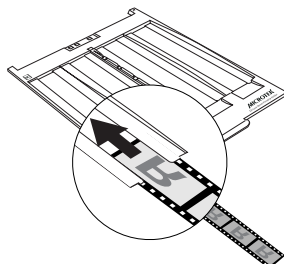
- EZ-Lock 35mm Slide Holder



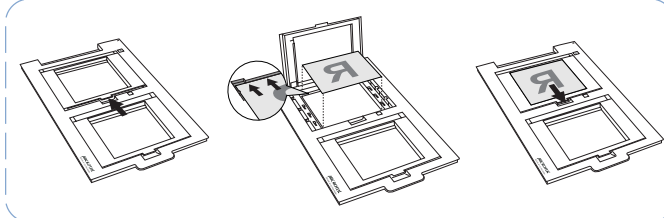
- EZ-Lock 6 x 22 cm Film Holder



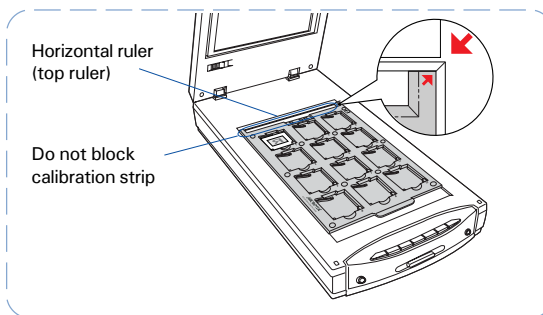
- EZ-Lock 35mm Filmstrip Holder



- EZ-Lock 4" x 5" Film Holder



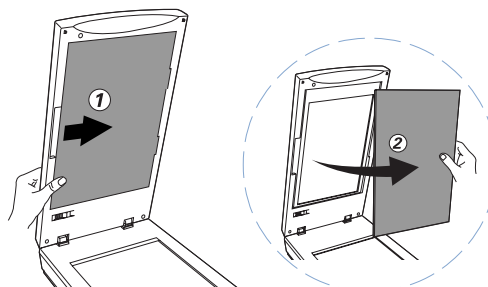
2. Raise the scanner lid (TMA), and place the film holder with the loaded film on the scanner glass bed. Align the arrows so that the holder is flush against the top ruler of the scan bed, with the calibration strip of the holder facing towards the back of the scanner.



B. Remove the Black Mat:

Raise the scanner lid, and push the **Black Mat** to the side to remove it from the scanner lid.

For more details on the use of the EZ-Lock Film Holders as well as information on how to scan non-standard-size film, refer to the ScanMaker i800 Plus Supplement.



How to Scan: Scanning Photos and Film

Scanning Photos

1. Position the photo on the upper glass bed, as detailed in the "Position the Scan Material" section of the Start Here guide.
2. Launch ScanWizard Pro.
 - If you are asked to calibrate your scanner, you can skip this section for now and come back to it later. Or, if you wish to perform calibration, see the ScanMaker i800 Plus Supplement for more details.
 - If prompted to set up Color Matching, click OK for now to accept the settings. You can always change the settings at a later time. For more details, see the ScanMaker i800 Plus Supplement.
3. In the Preview window of ScanWizard Pro, choose **Reflective** from the Scan Material menu.
4. Click the **Overview** button in the Preview window to see a preliminary scan of the image.
5. Select the **Scan Frame** tool, and choose the area to be scanned by sizing the marquee around the targeted area.
6. Specify your scanning requirements in the Settings window. Choose the desired image type and resolution, and adjust the scan frame settings if necessary.
7. Adjust image quality if necessary, using the Advanced Image Correction tools.
8. Click the **Scan** (or "Batch") button in the Preview window to start scanning.



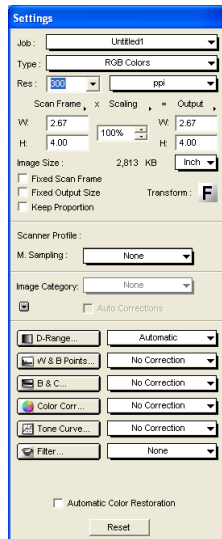
How to Scan: Scanning Photos and Film (cont.)

Scanning Positive or Negative Film

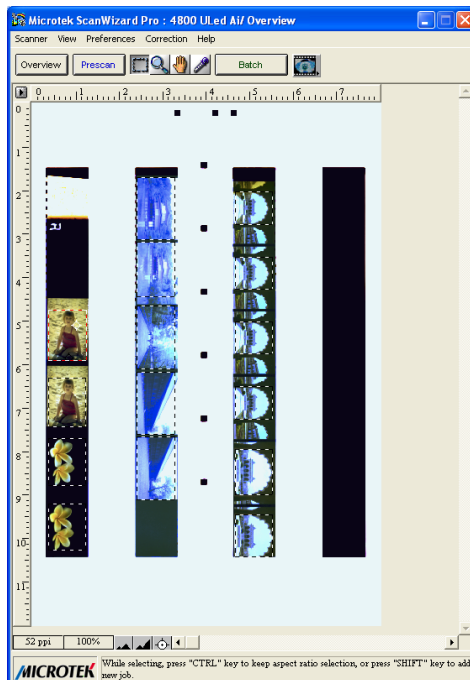
1. Select the film you wish to scan, then follow the procedures for positioning transparent films detailed in the "Using the TMA" section of this guide.
2. Launch ScanWizard Pro.
3. If scanning positive film such as 35mm slides:
 - a) Go to the Preview window of ScanWizard Pro and from the Scan Material menu, choose *Positive / Positive Film*.
 - b) Follow steps 4 to 7 of the procedures detailed in "Scanning Photos".

If scanning negatives:

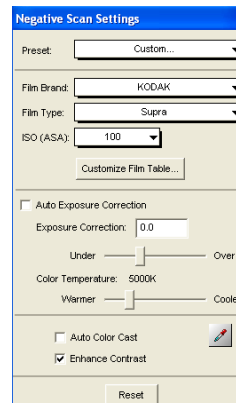
- a) Go to the Preview window of ScanWizard Pro and from the Scan Material menu, choose *Negative / Negative Film*. The Negative Scan Settings window appears.
 - b) Go to the Negative Scan Settings window, choose the film brand, film type, and ISO settings that match the film you use. For more details, refer to a PDF document called "ScanWizard Pro Reference Manual" in your Microtek Software CD/DVD and see the *Addendum to ScanWizard Pro* section.
 - c) Follow steps 4 to 7 of the procedures detailed in "Scanning Photos".
4. In the Scan Job Queue window, check the "Multiple Auto-crop for EZ-Lock Film Holder" option.
 5. Click the **Scan** (or "Batch") button in the Preview window to start scanning.



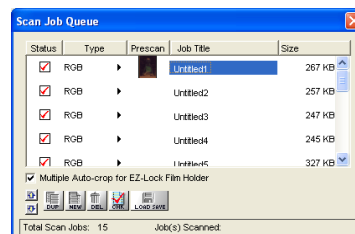
Settings window



Preview window



Negative Scan Settings window



Scan Job Queue window

Calibration

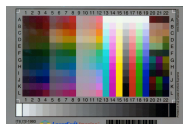
The Microtek Scanner ICC Profiler (MSP) program included with your ScanMaker i800 Plus is used to calibrate your scanner to achieve consistent and accurate color.

If the scanner you purchased contains IT8 calibration kit, there should include two industry-standard IT8 color targets inside: a Reflective target (10 x 15-cm) to calibrate the scanner for scanning photos, and a Transparency target (6 x 7-cm) to calibrate the scanner for scanning film.

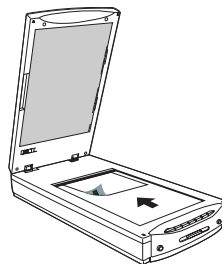
You will be asked to calibrate your scanner the first time you run ScanWizard Pro to try to scan. You may skip calibration to proceed directly to scanning, and then choose to come back at a later time to perform calibration.

For more details on calibration, refer to the ScanMaker i800 Plus Supplement and see the *Using the Microtek Scanner ICC Profiler* section.

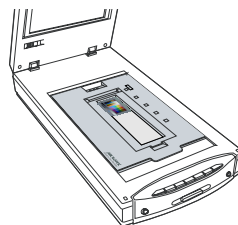
NOTE: This section only applies to the users who have IT8 calibration targets.



Reflective target



Transparency target



Problems?

The orange and green LEDs on the button panel indicate the status of the scanner.

		On - Ready to scan
		Orange Flashing - Scanning
		Sleep - Power saving
		Off - Scanner is off

First, make sure that you have followed installation steps 1 through 4. If your problem is listed here, try the suggested solution.

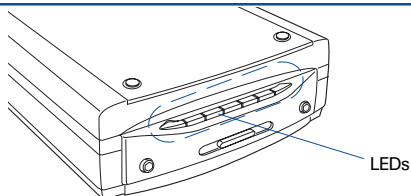
1. No light comes on when the scanner is turned on.
Make sure your scanner is connected to your computer and plugged into a power source.

2. Add/Remove Hardware Wizard appears on your screen.

Click the "Cancel" button and close the Control Panel. Disconnect the USB cable from the back of your computer, and refer to the installation instructions in this guide.

3. When trying to scan, an error message appears on your screen that reads, "Can't Find Scanners".

Make sure your scanner is unlocked (see Step 3).



LEDs

Make sure your scanner is connected to your computer and plugged into a power source (see Step 4).

Uninstall and reinstall the ScanWizard Pro software.

4. After clicking scan, a blank screen appears.

Make sure your scanner is unlocked (see Step 3).

Uninstall and reinstall the ScanWizard Pro software.

5. Having trouble scanning negatives or slides?

Make sure the scanner lid (TMA) is properly installed, with its connector securely connected to the scanner's 15-pin accessory port.

Make sure you place the EZ-Lock Film Holder properly on the scan bed. Do not block the calibration area (as indicated in the "Using the TMA" section).

From the Preview window of ScanWizard Pro, choose Positive or Negative from the Scan Material menu.

Uninstall and reinstall the ScanWizard Pro software.

Do You Need Assistance?

Manuals

If you have additional questions and need further instruction or information, we provide electronic manuals for:

1. Using your ScanMaker i800 Plus Supplement
2. Using the ScanWizard Pro scanning software
3. Using the bundled third-party software

To access the electronic manuals: Insert the scanner's software CD/DVD into your computer's CD/DVD-ROM drive. Next, locate and click the "Manuals" option when the software installer window appears on your screen. Finally, select and click the title of the manual you wish to view.

Missing Items

If your package is missing items, please call Microtek Customer Service Department.

Drivers & Software Upgrades

After you finish the installation of software, if you found that the installed drivers and software cannot run your product or your computer system properly later, please go to the Microtek **Download Service** site at ww7.microtek.com.tw/service.php to download and install any updates you may require.

For additional information about Microtek products, please visit our website at www.microtek.com.

Power Adapter

Use only power supplies (AC/DC adapters) listed below:

Voltage	Manufacturer	Model No.
100V to 240V	WXUI HARD	HDAD38W101

NOTE: Please make sure that the electrical outlet to where the scanner will be connected is nearby and readily accessible.

Copyright © 2013 Microtek. Microtek, ScanMaker, ArtixScan, ScanWizard and ColoRescue are trademarks or registered trademarks of Microtek International, Inc. All other trademarks or registered trademarks are the property of their respective holders. Specifications, software and hardware bundles are subject to change without notice. Delivery of technical support services subject to change without notice. Not responsible for typographical errors.

