

Supplement

ScanMaker i800 Plus features, scenarios, and information

PRO



Getting to Know Your ScanMaker i800 Plus

The ScanMaker i800 Plus is a high-resolution, high-performance scanner for reflective and transparency scanning. It features 4800 x 9600 dpi, 48-bit color, legal-size scan bed (8.5" x 14"), and a Hi-Speed USB interface. The built-in Transparent Media Adapter, together with Microtek's EZ-Lock™ Film Holders, let you scan film and transparencies up to 8" x 12" in size. The ScanMaker i800 Plus also offers the exclusive ColoRescue™ system for color restoration of photos and film.

Contents

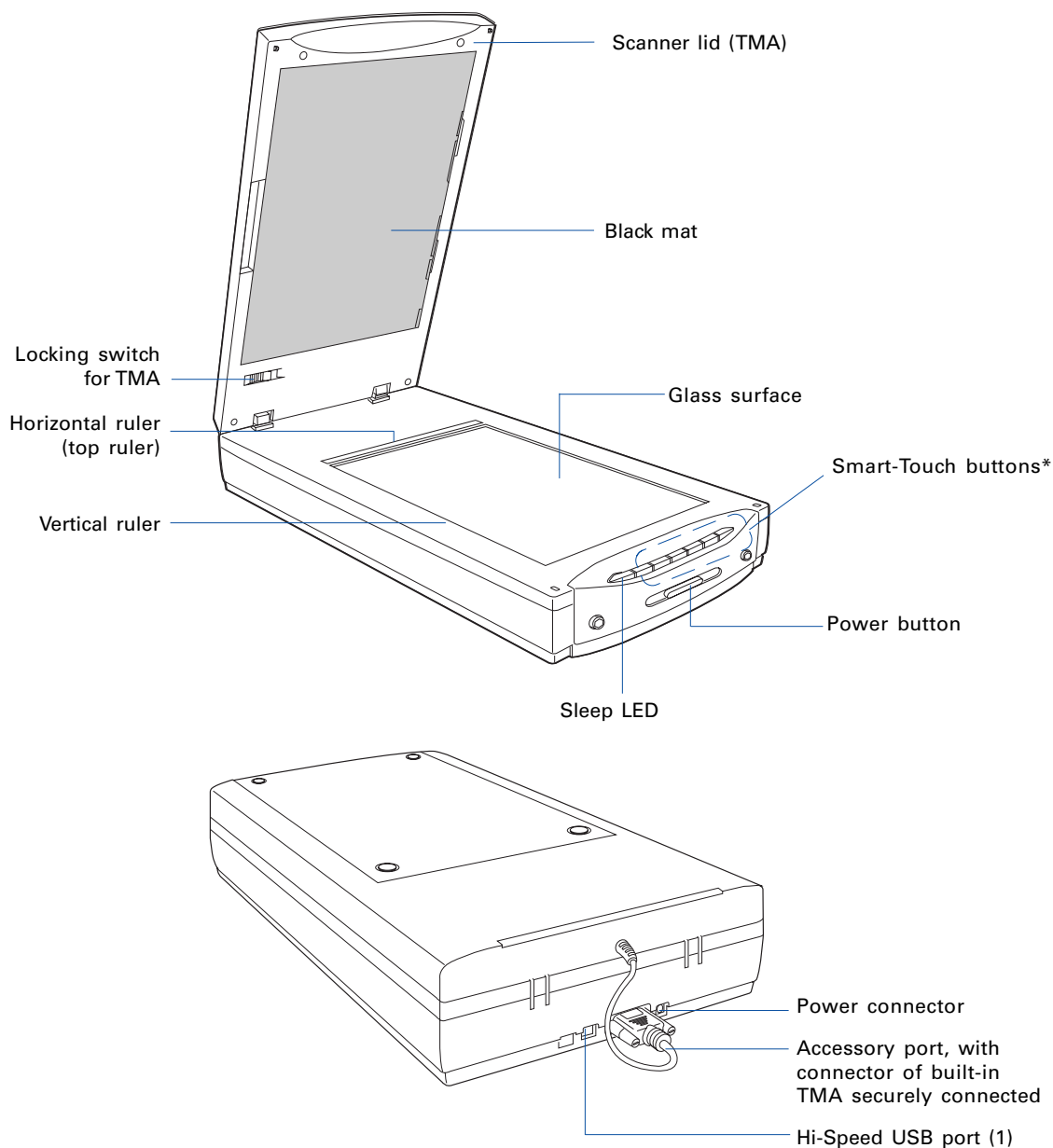
Getting to Know Your ScanMaker i800 Plus	1	Scanning Scenarios	13
Features of the ScanMaker i800 Plus	2	Scanning Photos	14
Taking a Closer Look	3	Scanning Positive Film	18
Unlocking the Scanner	4	Scanning Negative Film	21
Positioning Your Originals	6	Using the Microtek Scanner ICC Profiler (MSP)	24
Positioning Reflective Originals	6	MSP and IT8 Calibration Data Installation	24
Positioning Transparent Film	7	Calibration Kit	24
A. Using the EZ-Lock 35mm Slide Holder	8	Positioning the Target	25
B. Using the EZ-Lock 35mm Filmstrip Holder	9	Calibration Setup	26
C. Using the EZ-Lock 6 x 22 cm (120) Film Holder	10	Calibration and Profiling	27
D. Using the EZ-Lock 4" x 5" Film Holder	11	Loading a Profile	28
E. Using the Film Alignment Ruler	12	Specifications / System Requirements	29
		FCC Compliance Statement	30

Features of the ScanMaker i800 Plus

The ScanMaker i800 Plus comes with several important features, including the following:

- **4800 x 9600-dpi resolution:** The exceptionally high resolution of the ScanMaker i800 Plus lets you scan even postage-size images and enlarge them with amazing clarity, with little loss of detail. The scanner's 4.0 maximum optical density allows it to capture a wide range of tones approximating real-life color and hues.
- **Transparent Media Adapter (TMA):** With the TMA, the ScanMaker i800 Plus lets you scan a wide variety of slides, negatives, and transparencies, improving your productivity and saving you money in having to acquire additional film-scanning accessories.
- **Energy-saving LED light source:** Adopting LEDs as the light source, when the scanner is detected by the system, there are no requirements for any warm-up time before carrying out the scan, which boots your productivity and reduces energy costs amazingly. With its stable performance, the image quality will remain consistent even after used for a certain period of time.
- **Microtek's ColoRescue™ system:** With ColoRescue, the ScanMaker i800 Plus restores faded colors in photos and film, bringing hues back to their original luster and brilliance for more vibrant images. ColoRescue's one-click, automatic color recovery process is simple and straightforward, involving no learning curve or hassle.
- **Microtek ScanWizard™ Pro scanning software:** This is an advanced scanner controller program that provides many powerful, professional-level features for scanning. ScanWizard Pro includes the Microtek Scanner ICC Profiler (MSP) program, which allows users to calibrate the scanner and generate the appropriate ICC color profile to ensure color consistency and accuracy during the scanning process. ScanWizard Pro also features two color spaces, allowing users to work in the Native CMYK / RGB mode, as well as in the intuitive LCH (Lightness, Chroma, Hue) mode.

Taking a Closer Look



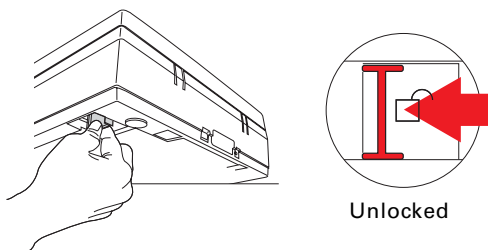
**The use of ScanWizard Pro, the Smart-Touch buttons located on the front panel of the ScanMaker i800 Plus are deactivated and therefore cannot be used. The Smart-Touch buttons are intended to be used in conjunction with ScanWizard EZ, Microtek's other scanning software, which are not bundled with the ScanMaker i800 Plus.*

Unlocking the Scanner

Before you can operate the scanner, you will need to unlock the scanner and TMA.

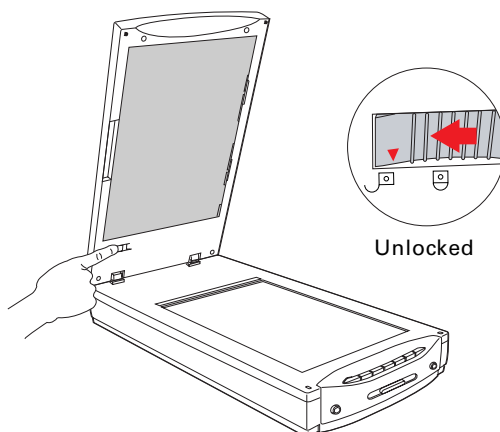
To unlock the scanner, follow the steps below:

1. Remove the yellow “Step 3” sticker from your scanner.
2. With the scanner power off, tilt the back left corner of the scanner to see the locking switch at the bottom.
3. Push the locking switch to the position as indicated in the graphic below, with the icon on the lock showing as “unlocked”.



To unlock the TMA, follow the steps below:

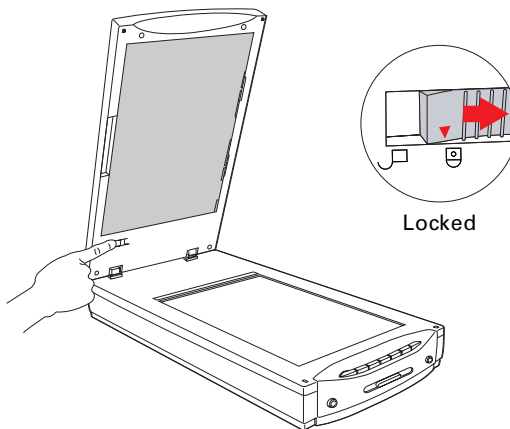
1. Raise the scanner lid (TMA), then remove the yellow “Step 3” sticker from the TMA.
2. Look for the locking switch at the base of the TMA.
3. Push the locking switch to the position as indicated in the graphic below, with the icon on the lock showing as “unlocked”.



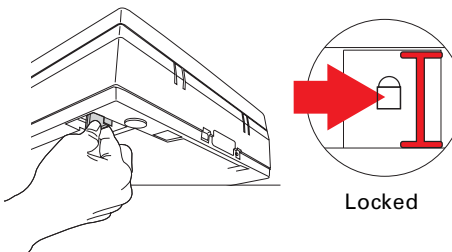
Shipping the Scanner

If you have to transport the scanner, you will need to lock the scanner and TMA back. Follow the steps below:

1. Turn off the scanner if your scanner is on.
2. Turn the scanner back on. The carriages of the scanner and TMA will move to the standby position in a few moments.
3. When the lights on the front panel of your scanner stop blinking, push the locking switch at the base of the TMA to the “Locked” position.



4. Push the locking switch at the bottom of the scanner to the “Locked” position.



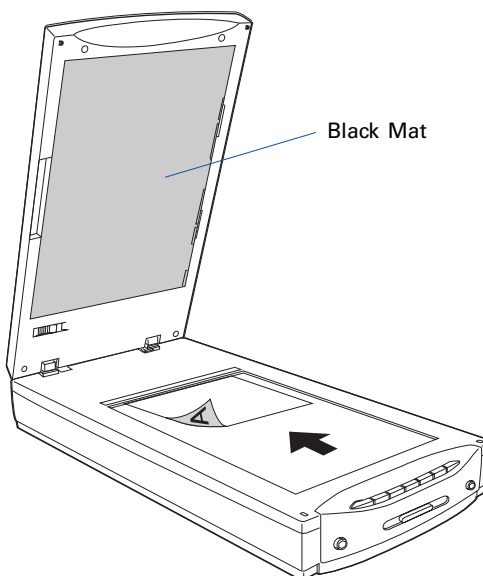
5. Turn off your scanner. The scanner is now ready for transport.

Positioning Your Originals

Positioning Reflective Originals

To scan reflective originals such as photos and printed matter, use the Black Mat which comes preattached to the scanner lid (TMA).

1. Raise the scanner lid, and make sure the Black Mat is attached to the scanner lid.
2. Place the reflective original face down on the scanner glass surface. Position the top end of the photo towards the **back** of the scanner.
3. Lower the scanner lid.



Positioning Transparent Film

To scan transparent film, use the EZ-Lock Film Holders or Film Alignment Ruler included with your ScanMaker i800 Plus package. Use the EZ-Lock Film Holders to scan standard-size transparent film such as 35mm slides, 35mm filmstrips, 4" x 5" film, 6 x 4.5 cm, 6 x 6 cm, 6 x 7 cm, 6 x 9 cm, or 6 x 17 cm (120) film. Use the Film Alignment Ruler to scan non-standard-size transparent film such as 8" x 10" film.

The EZ-Lock Film Holders not only ensure precise alignment of film and consistent scans, but they perform automatic cropping during film scanning. To scan film, use the film holder that correctly matches the film type to be scanned.

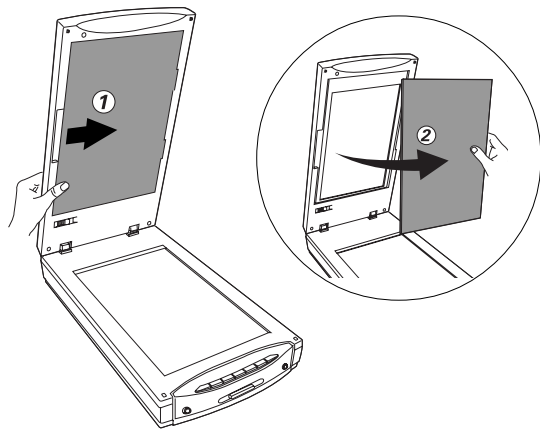
Before proceeding with film scanning, take note of the information presented in the two sections below.

Removing the Black Mat

The Black Mat is designed to work with scanning of reflective materials such as photos and printed matter. It is not designed to work with scanning of slides, negatives, and transparencies. During film scanning, the Black Mat should be removed to reveal the light source in the scanner for film.

To remove the Black Mat:

Raise the scanner lid, push the Black Mat to the side (1 in diagram) to remove it from the scanner lid (2 in diagram).



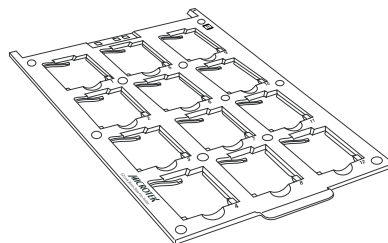
Notes on auto-cropping for film scanning

For the scanner to perform automatic cropping during scanning, the following conditions below should all be met:

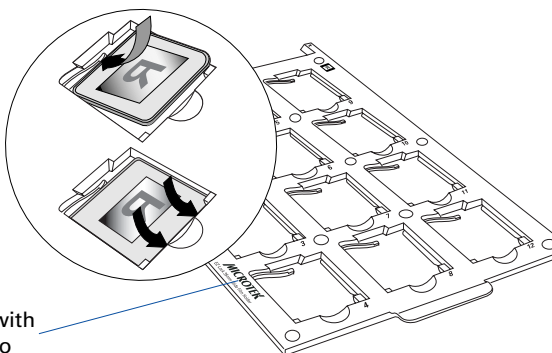
- Your computer's operating system is either Windows or Mac OS X
- The EZ-Lock Film Holder is correctly aligned on the scan bed
- The scan material is positive or negative film, with the slide or filmstrip to be scanned is correctly loaded on the EZ-Lock Film Holder
- In the Scan Job Queue window of ScanWizard Pro, the "Multiple Auto-crop for EZ-Lock Film Holder" option is checked.

A. Using the EZ-Lock 35mm Slide Holder

To scan 35mm slides, use the EZ-Lock 35mm Slide Holder, which can hold up to 12 mounted 35mm slides at a time.



1. Place the 35mm slides to be scanned inside the individual frames of the EZ-Lock 35mm Slide Holder. The shiny base of the 35mm slide should be facing down, and the emulsion side of the slide should be facing up.

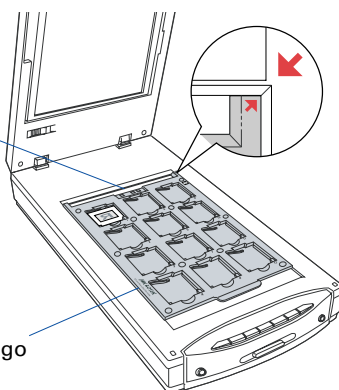


Orient the holder with the "Microtek" logo facing up

2. Raise the scanner lid, then place the EZ-Lock 35mm Slide Holder towards the back of the scanner, with the loaded film on the scanner glass surface.

Keep **calibration strip** on the glass surface clear and free of any obstruction

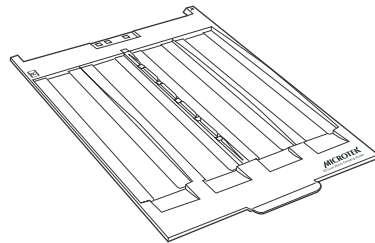
"Microtek" logo



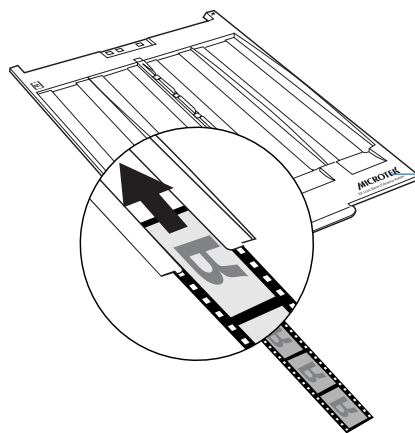
To make sure the auto multiframe cropping feature performs correctly, place the holder on the scan bed, correctly oriented and showing the side with the Microtek logo face up. Align the red arrows so that the holder's front edge is flush against the top ruler of the scanner.

B. Using the EZ-Lock 35mm Filmstrip Holder

To scan 35mm filmstrips, use the EZ-Lock 35mm Filmstrip Holder, which can simultaneously hold four strips of 6 frames each, or a total of 24 frames.



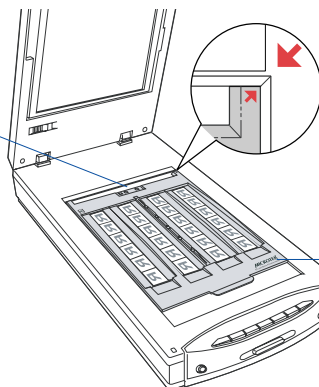
1. Place the 35mm filmstrip to be scanned inside the frame of the EZ-Lock 35mm Filmstrip Holder. The shiny base of the 35mm filmstrip should be facing down, and the emulsion side of the filmstrip should be facing up.



Orient the holder with the "Microtek" logo facing up

2. Raise the scanner lid, then place the EZ-Lock 35mm Filmstrip Holder towards the back of the scanner, with the loaded film on the scanner glass surface.

Keep **calibration strip** on the glass surface clear and free of any obstruction

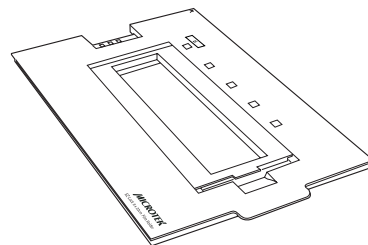


To make sure the auto multiframe cropping feature performs correctly, place the holder on the scan bed, correctly oriented and showing the side with the Microtek logo face up. Align the red arrows so that the holder's front edge is flush against the top ruler of the scanner.

"Microtek" logo

C. Using the EZ-Lock 6 x 22 cm (120) Film Holder

To scan 6 x 4.5 cm, 6 x 6 cm, 6 x 7 cm, 6 x 9 cm, and 6 x 17 cm film, use the EZ-Lock 6 x 22 cm (120) Film Holder, which can hold up to 4 pieces of 6 x 4.5 cm film, 2 pieces of 6 x 9 cm film, or a single piece of 6 x 17 cm film.

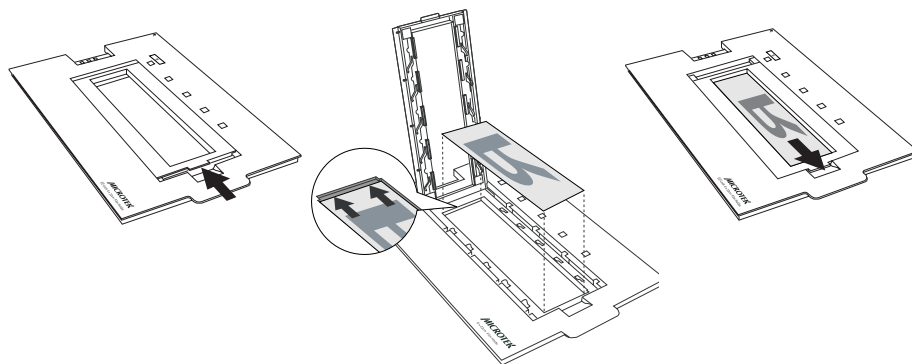


1. Place the 120 film to be scanned inside the EZ-Lock 6 x 22 cm (120) Film Holder, as indicated in the graphics below. The shiny base of the 120 film should be facing down, and the emulsion side of the filmstrip should be facing up.

a) Push on the side to open the lid.

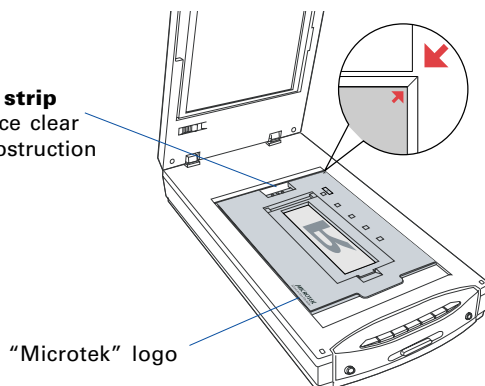
b) Place the film face down into the holder.

c) Pull down the side to close the lid.



2. Raise the scanner lid, then place the EZ-Lock 6 x 22 cm (120) Film Holder towards the back of the scanner, with the loaded film on the scanner glass surface.

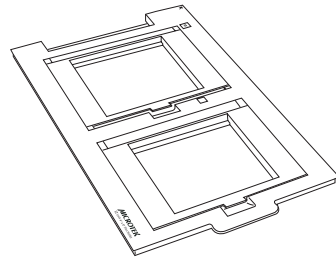
Keep **calibration strip** on the glass surface clear and free of any obstruction



To make sure the auto multiframe cropping feature performs correctly, place the holder on the scan bed, correctly oriented and showing the side with the Microtek logo face up. Align the red arrows so that the holder's front edge is flush against the top ruler of the scanner.

D. Using the EZ-Lock 4" x 5" Film Holder

To scan 4" x 5" film, use the EZ-Lock 4" x 5" Film Holder, which can hold up to 2 pieces of 4" x 5" film at a time.

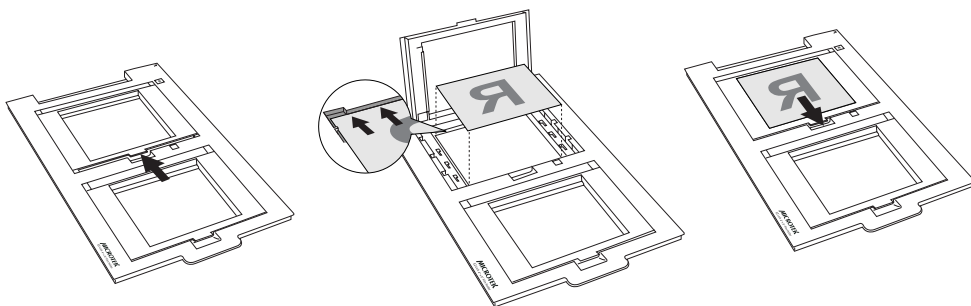


1. Place the 4" x 5" film to be scanned inside the EZ-Lock 4" x 5" Film Holder, as indicated in the graphics below. The shiny base of the 4" x 5" film should be facing down, and the emulsion side of the filmstrip should be facing up.

a) Push on the side to open the lid.

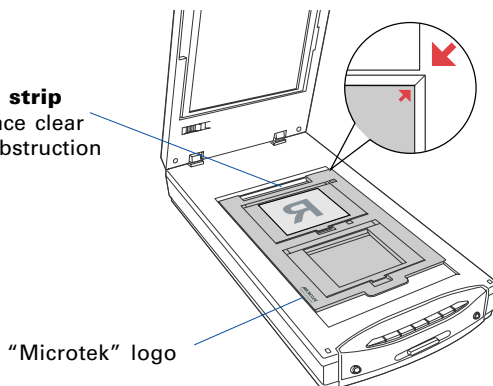
b) Place the film face down into the holder.

c) Pull down the side to close the lid.



2. Raise the scanner lid, then place the EZ-Lock 4" x 5" Film Holder towards the back of the scanner, with the loaded film on the scanner glass surface.

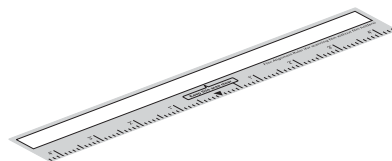
Keep **calibration strip** on the glass surface clear and free of any obstruction



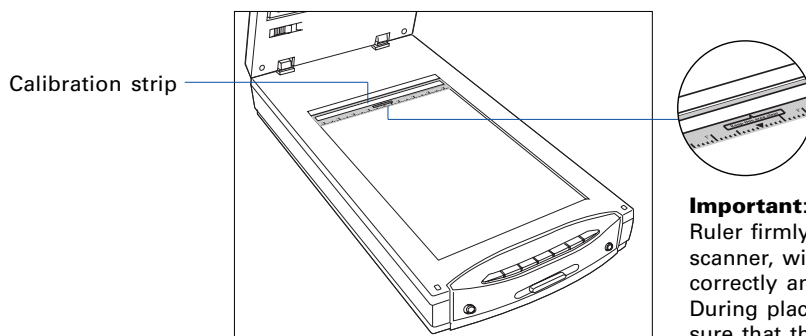
To make sure the auto multiframe cropping feature performs correctly, place the holder on the scan bed, correctly oriented and showing the side with the Microtek logo face up. Align the red arrows so that the holder's front edge is flush against the top ruler of the scanner.

E. Using the Film Alignment Ruler

To scan non-standard-size film such as 8" x 10" film, use the Film Alignment Ruler, which allows you to scan film up to 8" x 12" in size.

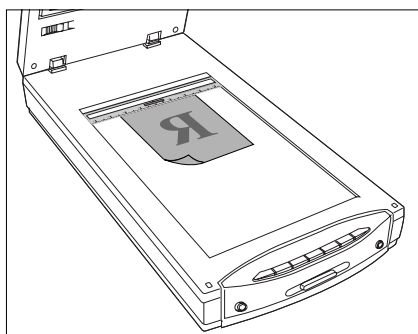


1. Place the Film Alignment Ruler towards the back of the scanner on the scanner glass surface.



Important: Align the Film Alignment Ruler firmly against the top ruler of the scanner, with the ruler oriented correctly and with the correct side up. During placement of the Ruler, make sure that the **calibration strip** on the Ruler is kept clear and free of obstruction at all times.

2. Place the film (non-standard size film) to be scanned on the scanner glass surface, and center the film along the Film Alignment Ruler on the scanner.



Scanning Scenarios

The following pages provide various scenarios for scanning with the ScanMaker i800 Plus by using ScanWizard Pro, including the following:

- Scanning photos: This scenario can also be your first scan in order to familiarize yourself with scanning basics.
- Scanning positive film: This scenario details the steps for scanning positive film, such as 35mm mounted slides and X-rays.
- Scanning negative film: This scenario details the steps for scanning negative film, such as 35mm filmstrips, 6 x 4.5 cm, 6 x 6 cm, 6 x 7 cm, 6 x 9 cm, 6 x 17 cm film, and 4" x 5" film.

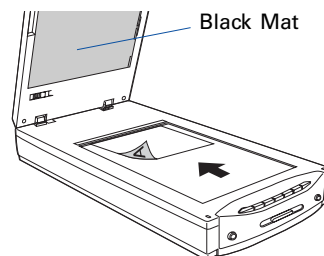
***Note:** In the following pages that detail the various scanning scenarios, the ScanWizard Pro interface is shown with the Preview, Settings, and Scan Job Queue windows as they appear in Windows.*

The appearance of the windows will change slightly in Mac OS X for the Mac platform, but the location of the various commands and icons remain in approximately the same locations throughout the ScanWizard Pro interface.

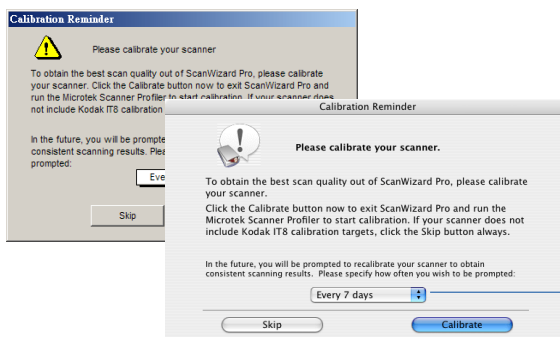
Scanning Photos

1. Raise the scanner lid, and place the photo to be scanned face down on the scanner glass surface. Position the top end of the photo towards the **back** of the scanner.

Make sure the **Black Mat** is attached on the scanner lid, and then close the scanner lid before you launch ScanWizard Pro.



2. Launch ScanWizard Pro either as a stand-alone by clicking on the program icon, or by using the File-Import or File-Acquire command from your image-editing program (such as Adobe Photoshop). Alternatively, you can start ScanWizard Pro from the **Applications** folder in your Mac OS X system.
 - The first time when you launch ScanWizard Pro, you will be prompted to perform color calibration for your scanner. (Dialog boxes shown in Windows XP and Mac OS X).



Allows you to specify how often you wish to be prompted to calibrate the scanner. The default setting is 14 days

- Click the **Skip** button to exit the “Calibration Reminder” window. Clicking the Skip button allows you to use the factory default ICC profile for your scanner.

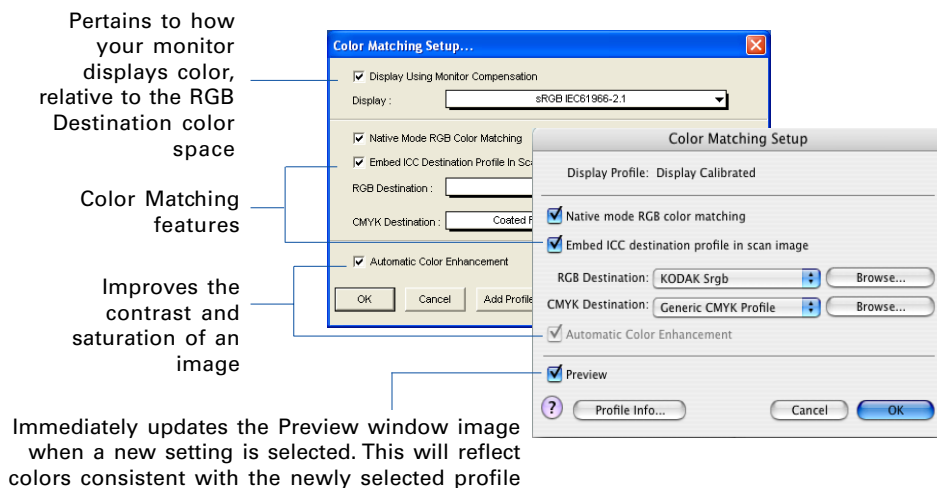
***Note:** If your scanner does not include IT8 calibration targets, disregard the Calibration reminder window whenever it appears, and click the Skip button always.*

- Click the **Calibrate** button to run the Microtek Scanner ICC Profiler (MSP) program to perform color calibration and to customize the ICC profile for your scanner. After finishing with calibration, relaunch ScanWizard Pro.

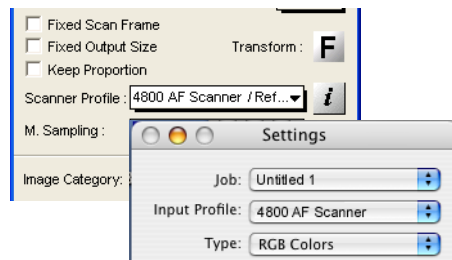
***Note:** The MSP program should be installed before you perform color calibration for your scanner. For details on how to install the MSP program and how to use it to calibrate the scanner, refer to section of the manual titled “Using the Microtek Scanner ICC Profiler”.*

- Next, you will be prompted to set up color matching for your scanner. If you are not sure about what to do, simply click the **OK** button to accept the settings. You can always change the settings at a later time.

For more information, see the *Color Matching Setup* section in the *ScanWizard Pro Reference Manual* in the Microtek CD.



3. Go to the Preview window of ScanWizard Pro, and choose **Reflective** from the **Scan Material** menu.
4. Optional: If calibration has been performed, go to the Settings window in ScanWizard Pro. Choose the profile you have just created in the **Input Profile / Scanner Profile** menu.

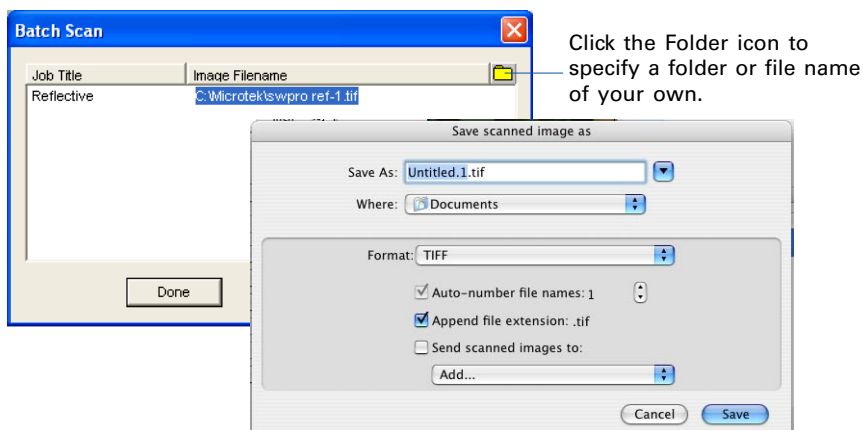


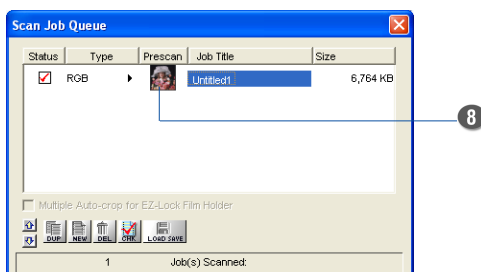
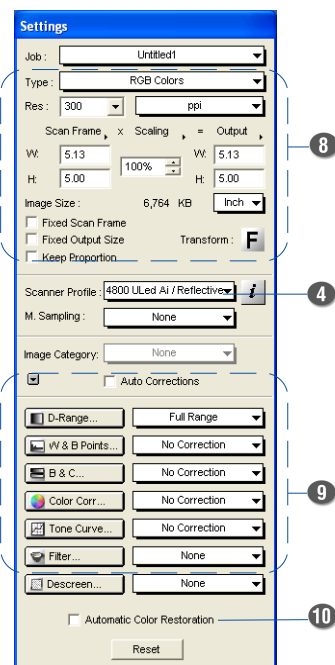
5. Click the **Overview** button to perform a preliminary scan of the image, which will appear in the Preview window.
6. Select the **Scan Frame** tool from the Toolbar in the Preview window, and choose the area to be scanned by dragging a rectangle around it. You will see a flashing frame (marquee) around the selected area.
7. Click the **Prescan** button to display a detailed image of area selected by the Scan Frame tool. A thumbnail of the image appears as well in the Scan Job Queue window.

8. Specify your scanning requirements in the Settings window.
 - a) Select a desired image type.
 - b) Select a desired resolution.
 - c) Adjust the scan frame settings if necessary.
9. Adjust image quality if necessary, using the Advanced Image Correction (AIC) tools.
10. If the colors in your photo are faded and need restoring, check the “Automatic Color Restoration” box in the Settings window.
11. Click the **Scan** (or “Batch”) button in the Preview window to start scanning.
 - If ScanWizard Pro was launched from an application program, the image is then delivered to your application, where the image can be saved, printed, or edited.

Note: In Mac OS X, you will be prompted to specify the file attributes for the scanned image before scanning takes place.

 - If ScanWizard Pro was launched in stand-alone mode, you will be prompted to specify the file attributes for the scanned image after the Scan or Batch button is pressed, such as entering the file name, specifying a folder name of your own, etc. When you have completed the settings, press the Done/Save button, and the scanner will automatically scan and save your image based on your settings.



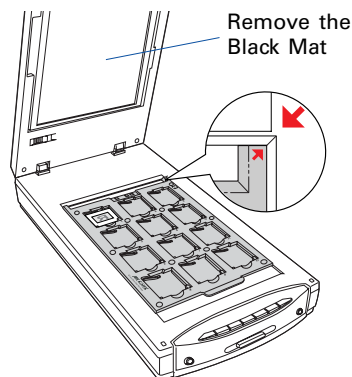


Scanning Positive Film

1. Raise the scanner lid, then load the positive film that you wish to scan and place the EZ-Lock Film Holder on the scanner glass surface.

Gently lower the scanner lid down onto the scanner glass bed.

Important: Do not use the Black Mat. For details on how to use the EZ-Lock Film Holder and how to place film, see the section “Positioning Transparent Film” elsewhere in this document.



2. Launch ScanWizard Pro either as a stand-alone by clicking on the program icon, or by using the File-Import or File-Acquire command from your image-editing program (such as Adobe Photoshop). Alternatively, you can start ScanWizard Pro from the **Applications** folder in your Mac OS X system.
3. Go to the Preview window and choose **Positive / Positive Film** from the **Scan Material** menu.

If this is your first time to scan transparent media, you will be prompted to perform color calibration for your scanner. A Calibration Reminder window appears.



Allows you to specify how often you wish to be prompted to calibrate the scanner. The default setting is 14 days

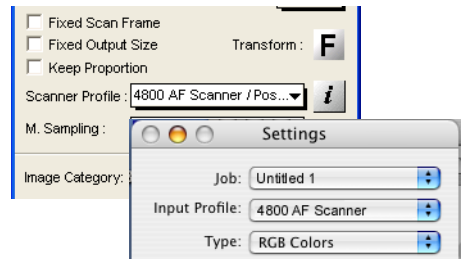
- Click the **Skip** button to exit the “Calibration Reminder” window. Clicking the Skip button allows you to use the factory default ICC profile for your scanner.

Note: If your scanner does not include IT8 calibration targets, disregard the Calibration reminder window whenever it appears, and click the Skip button always.

- Click the **Calibrate** button to run the Microtek Scanner ICC Profiler (MSP) program to perform color calibration and to customize the ICC profile for your scanner. After finishing with calibration, relaunch ScanWizard Pro.

***Note:** The MSP program should be installed before you perform color calibration for your scanner. For details on how to install the MSP program and how to use it to calibrate the scanner, refer to section of the manual titled “Using the Microtek Scanner ICC Profiler”.*

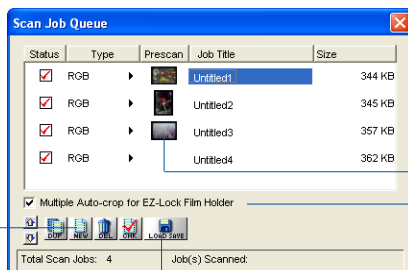
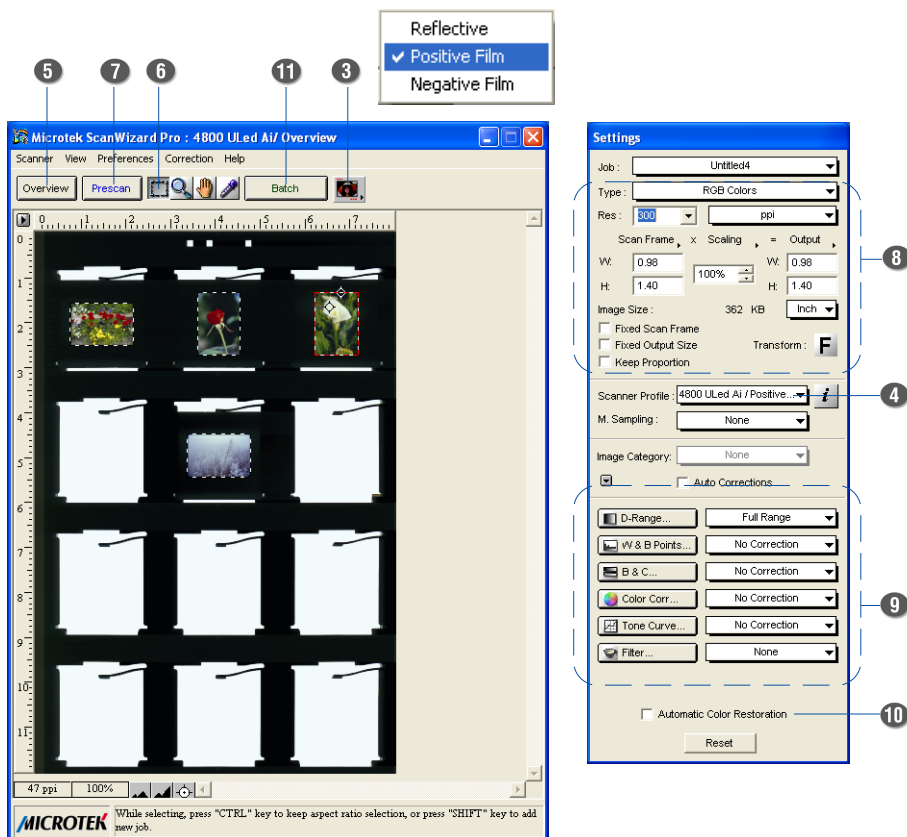
4. Optional: If calibration has been performed, go to the Settings window in ScanWizard Pro. Choose the profile you have just created in the **Input Profile / Scanner Profile** menu.



5. Click the **Overview** button to perform a preliminary scan of your original.
6. Select the **Scan Frame** tool from the Toolbar in the Preview window, and choose the area to be scanned by dragging a rectangle around it. You will see a flashing frame (marquee) around the selected area.
7. Click the **Prescan** button to display a detailed image area selected via the Scan Frame tool. A thumbnail of the image appears as well in the Scan Job Queue window.
8. Specify your scanning requirements in the Settings window.
 - a) Select a desired image type.
 - b) Select a desired resolution.
 - c) Adjust the scan frame settings if necessary.
9. Adjust image quality if necessary, using the Advanced Image Correction (AIC) tools.
10. If the colors in your photo are faded and need restoring, check the “Automatic Color Restoration” box in the Settings window.
11. Click the **Scan** (or “Batch”) button in the Preview window to start scanning.
 - If ScanWizard Pro was launched from an application program, the image is then delivered to your application, where the image can be saved, printed, or edited.

***Note:** In Mac OS X, you will be prompted to specify the file attributes for the scanned image before scanning takes place.*

 - If ScanWizard Pro was launched in stand-alone mode, you will be prompted to specify the file attributes for the scanned image after the Scan or Batch button is pressed, such as entering the file name, specifying a folder name of your own, etc. When you have completed the settings, press the Done/Save button, and the scanner will automatically scan and save your image based on your settings.



The New button allows you to create as many scan jobs as you wish, and each scan job can then have its own settings.

The Load/Save button allows you to select a film template mode from a list of predefined modes. The selected template mode will crop the images and replace all existing scan jobs automatically.

Check the “Multiple Auto-crop for EZ-Lock Film Holder” option

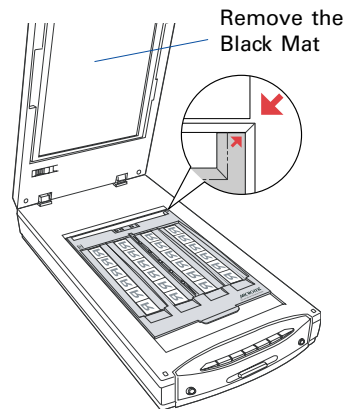
Scanning Negative Film

Note: Make sure you read the chapter “Addendum to ScanWizard Pro” in the *ScanWizard Pro Reference Manual* for important information on new features related to Negative Film Scanning.

1. Raise the scanner lid, then load the negative film that you wish to scan and place the EZ-Lock Film Holder on the scanner glass surface.

Gently lower the scanner lid down onto the scanner glass bed.

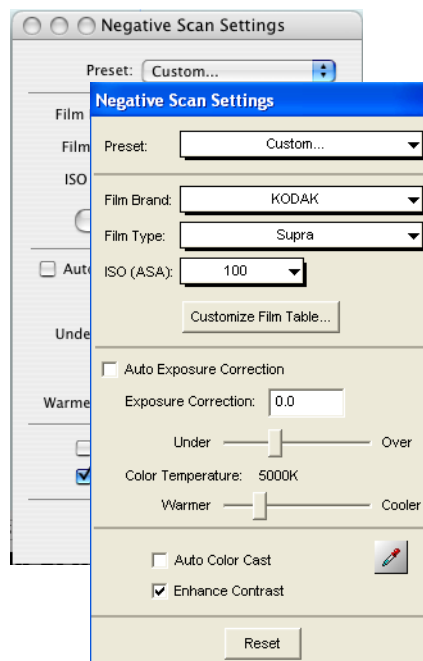
Important: Do not use the Black Mat. For details on how to use the EZ-Lock Film Holder and how to place film, see the section “Positioning Transparent Film” elsewhere in this document.



2. Launch ScanWizard Pro either as a stand-alone by clicking on the program icon, or by using the File-Import or File-Acquire command from your image-editing program (such as Adobe Photoshop). Alternatively, you can start ScanWizard Pro from the **Applications** folder in your Mac OS X system.
3. Go to the Preview window and choose **Negative / Negative Film** from the **Scan Material** menu.
4. Click the **Overview** button to perform a preliminary scan of your original.
5. Select the **Scan Frame** tool from the Toolbar in the Preview window, and choose the area to be scanned by dragging a rectangle around it. You will see a flashing frame (marquee) around the selected area.
6. Click the **Prescan** button to display a detailed image. A thumbnail of the image appears as well in the Scan Job Queue window.
7. In the Negative Scan Settings window, you can specify options related to your scanned negative film. Follow the steps below.
 - a) In the *Negative Scan Settings* window, choose the Film Brand, Film Type, and ISO settings that match your film.
 - b) The settings for the negative film you selected are applied to the prescan image, and the adjusted image is displayed in the Preview window.

- c) You can save the selected negative film settings into the Preset drop-down menu for easy access in the future.

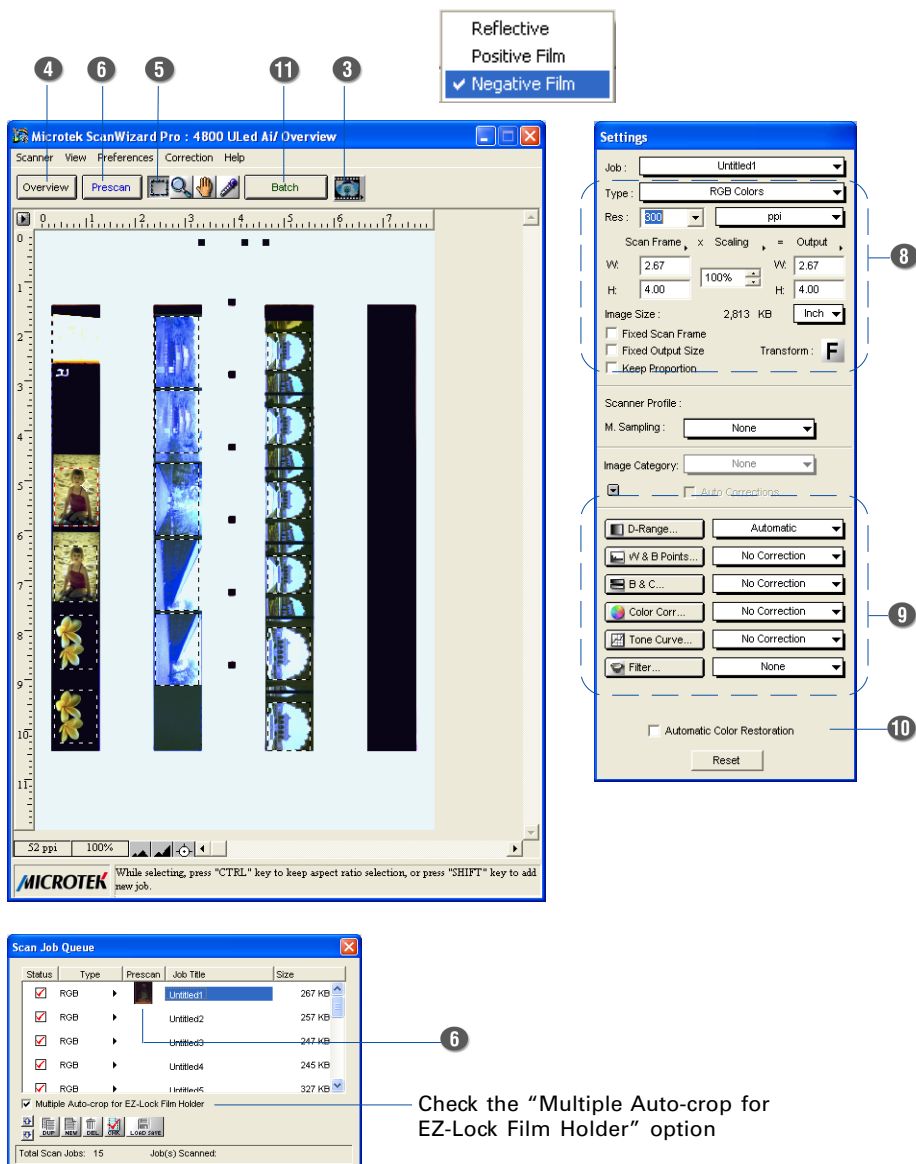
For more details on how to control settings for negative film scanning, see the section “Negative Scan Settings Window” in the ScanWizard Pro Reference Manual in the Microtek CD-ROM.



8. Specify your scanning requirements in the *Settings* window.
 - a) Select a desired image type.
 - b) Select a desired resolution.
 - c) Adjust the scan frame settings if necessary.
9. Adjust image quality if necessary, using the Advanced Image Correction (AIC) tools.
10. If the colors in your film are faded and need restoring, check the “Automatic Color Restoration” box in the Settings window.
11. Click the **Scan** (or “Batch”) button in the Preview window to start scanning.
 - If ScanWizard Pro was launched from an application program, the image is then delivered to your application, where the image can be saved, printed, or edited.

***Note:** In Mac OS X, you will be prompted to specify the file attributes for the scanned image before scanning takes place.*

 - If ScanWizard Pro was launched in stand-alone mode, you will be prompted to specify the file attributes for the scanned image after the Scan or Batch button is pressed, such as entering the file name, specifying a folder name of your own, etc. When you have completed the settings, press the Done/Save button, and the scanner will automatically scan and save your image based on your settings.



Using the Microtek Scanner ICC Profiler (MSP)

The Microtek Scanner ICC Profiler (MSP) is a scanner calibration and profiling utility program designed exclusively for Microtek scanners. Used together with the color calibration target, the ICC Profiler determines the color attributes of your scanner accurately, then generates an ICC profile tailored exclusively for the scanner that you are using under ScanWizard Pro.

MSP and IT8 Calibration Data Installation

Before installing MSP, ScanWizard Pro needs to be installed on your system. This will ensure that the MSP utility will install and function properly.

To install MSP, take note of the following:

- For PC: MSP installation will automatically launch following the ScanWizard Pro installation. Follow the on-screen instructions to install and you will be prompted to insert the IT8 Calibration Data CD included in your software kit. Insert the IT8 Calibration Data CD to ensure that the MSP utility will have the latest color profile targets to reference. Then the MSP installation is complete.
- For Mac OS X: Double click the MSP installer icon. After installing the software, insert the IT8 Calibration Data CD and double-click the IT8 installer icon. Follow the on-screen instructions to install the IT8 Calibration Data to ensure that the MSP utility will have the latest color profile targets to reference. Then the MSP installation is complete.

Calibration Kit

If the scanner you purchased contains IT8 calibration kit, there should include two industry-standard IT8 color targets for calibration: a Reflective target (10 x 15-cm) to calibrate the scanner for scanning photos; and a Transparency target (6 x 7-cm) to calibrate the scanner for scanning film.

If the scanner you purchased does not contain IT8 calibration kit, you may purchase industry-standard IT8 color targets from supplying stores near you if necessary.

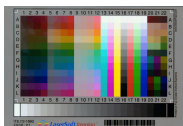
The calibration targets are very delicate and must be handled carefully. Take note of the following:

- Gently remove targets from their respective protective sleeves and avoid touching the target image surface.
- When not in use, keep targets in their sleeves and keep away from light and heat.

***Note:** To keep the colors in your scanner consistent, you should perform color calibration on a regular basis. Professional photographers, graphic designers or others who require extremely precise color may wish to calibrate the scanner every time it is used.*

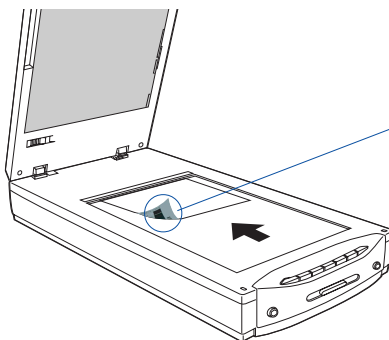
Positioning the Target

Proper positioning of the target on the scanner is important for successful calibration. Incorrect positioning of the target will result in an unsuccessful calibration.



A. Positioning the Reflective Target

1. Flip and place the reflective target on the scanner glass surface, making sure that the **top end of the target** is positioned toward the back of the scanner, with its edge firmly aligned against the ruler.
2. Using the scanner's top ruler as a point of reference, adjust the target so that it is positioned at the center of the scanner glass bed.

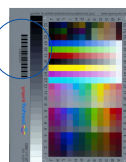
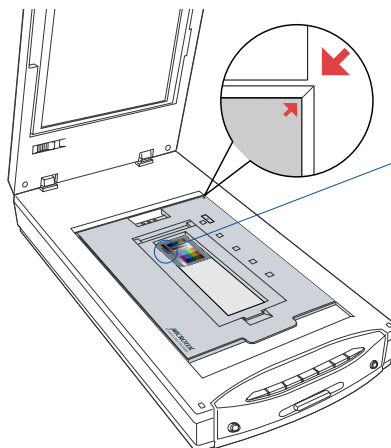


Important: Make sure that the reflective target is facing down and the side of the target (with the barcode) is at the left side of the scanner.



B. Positioning the Transparent Target

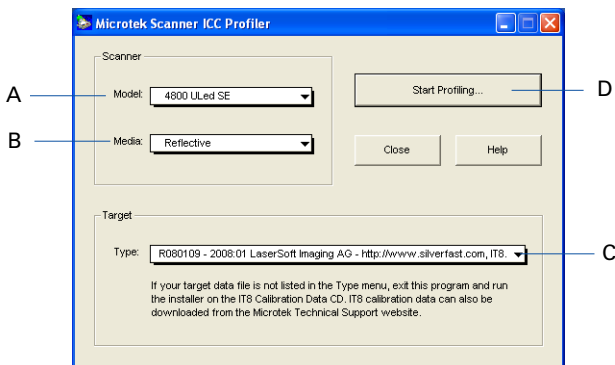
1. Flip and place the transparent target inside the EZ-Lock 6 x 22 cm (120) Film Holder; orientation of the target is critical. Refer to the section “C. Using the EZ-Lock 6 x 22 cm (120) Film Holder” on page 10 of this manual to load the film.
2. Place the EZ-Lock 6 x 22 cm (120) Film Holder towards the back of the scanner, with the loaded target on the scanner glass surface.



Important: Make sure that the transparent target is facing down and the side of the target (with the barcode) is at the left side of the scanner.

Calibration Setup

With the target properly positioned on the scanner, turn on your scanner and let it warm up for about five minutes. Launch the MSP program; the MSP main window appears.



- A. Choose the scanner model that you are calibrating.
- B. Choose the correct target media. If you are calibrating the reflective target, select *Reflective*. Otherwise, select *Positive*.
- C. Select the date code and target type (or reference number) from the drop-down list that matches your target. You can verify this information by looking at the left and right corners of the target's bottom margin.



Date code and target type information

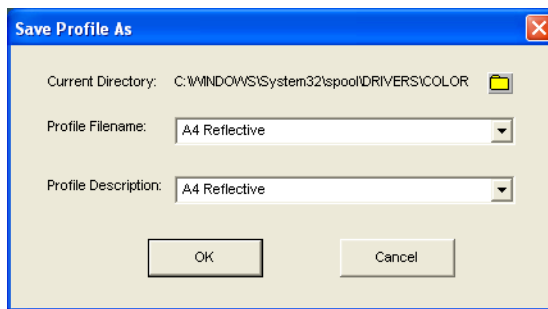
If the desired data file is not present in the drop-down menu, install the IT8 Calibration Data to update the target profiles in your system.

- D. When all the settings are done, click the *Start (or Start Profiling)* button. The calibration window will appear, and an initial preview of the target is performed.

Calibration and Profiling

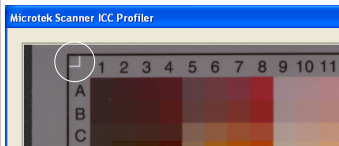
After the Preview, you are now ready to complete calibration and create a profile for your scanner.

1. Scan the target. To do this, select the entire target by dragging a frame over it, and then click the *Next>>* button.
2. Align the registration marks of the target with your cursor (see inset at bottom of page).
3. Click the Create *Profile* button (PC) or *Finish* button (Mac) to create the scanner ICC profile. At the end of the profiling process, a dialog box appears, prompting you to enter a profile name and description.



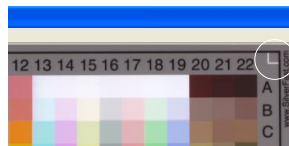
Aligning the Registration Marks

A. Upper-left registration mark



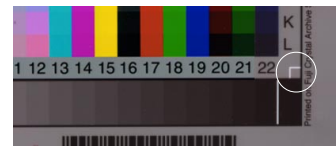
Move the cursor to the target image area; the pointer will change to a horizontally flipped L mark ("┐"). Align the cursor with the small upper-left registration mark.

B. Upper-right registration mark



After the upper left mark is aligned, the upper right part of the target image is displayed, and an instruction dialog box prompts you to align the upper right registration mark. Move the cursor to the target image area; the pointer will change to a normal L mark ("└"). Align the cursor with the small upper-right registration mark.

C. Bottom-right registration mark

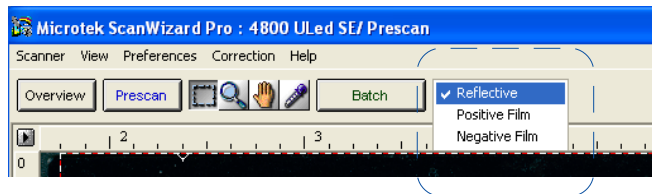


After the upper right mark is aligned, the lower right part of the target image is displayed, and an instruction dialog box prompts you to align the bottom-right registration mark. Move the cursor to the target image area; the pointer will change to a vertically flipped L mark ("┘"). Align the cursor with the small bottom-right registration mark.

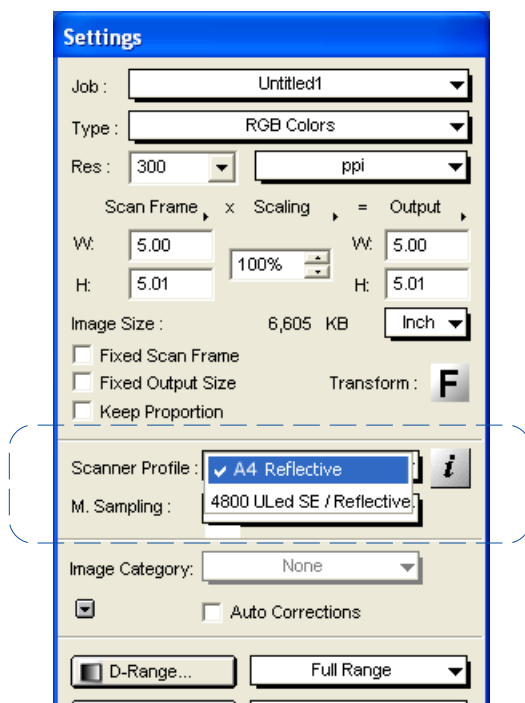
Loading a Profile

Once the profile has been produced, follow the steps below to load the profile you just created.

1. Launch ScanWizard Pro.
2. In the Preview window, click the **Scan Material** icon. Select the “Reflective” option for reflective materials; select the “Positive” or “Positive Film” option for transparencies and slides.



3. From the Settings window, click the **Scanner Profile/Input Profile** list box, and select the profile you have just created.



Specifications

Model Type	MRS-9600TFU2L		
Image Sensor	CCD (Charge-Coupled Device)		
Light Source	LED (Light Emitting Diode)		
Scanning Modes	Color, grayscale, and black-and-white in a single scanning pass True 48-bit color (approx. 281×10^{12} colors) 16-bit grayscale (approx. 65,536 shades of gray)		
Scanning Area	Reflective: 8.5" x 14" (216 mm x 356 mm) Transparent: 8" x 12" (203 mm x 305 mm)		
Resolution	Optical: 4800 dpi x 9600 dpi Interpolated: 65,535 dpi (PC); 32,767 dpi (Mac)		
Dynamic Range	4.0 Dmax		
Interface	Hi-Speed USB (USB 2.0)		
Dimensions (L x W x H)	22.6" x 11.7" x 4.6" (576 mm x 297 mm x 118 mm)		
Net Weight	14.1 lbs (6.4 kg)		
Voltage	AC 100V to 240V, 50/60 Hz (Input) DC 15V, 2.5A (Output)		
Power Consumption	38 W (Max)		
Environment	Operating Temperature: 50° F to 104° F (10° C to 40° C) Relative Humidity: 20% to 85%		
Power supply	<u>Voltage</u>	<u>Manufacturer</u>	<u>Model No.</u>
(AC/DC adapter)	100V to 240V	WUXI HARD	HDAD38W101

System Requirements

General Requirements

- CD/DVD-ROM drive (for installing software)
- Color display with 24-bit color output capability
- 512 MB RAM or more

PC and compatibles

- Pentium IV PC or higher with Hi-Speed USB (USB 2.0) port
- Microsoft Windows XP, Vista or Windows 7

Macintosh

- iMac or Mac G3/G4/G5 with built-in USB port
- Mac OS X 10.4 or later

Important

Specifications, software bundles, and accessories are subject to change without notice. Not responsible for typographic errors.

FCC Compliance Statement

This equipment (Model: MRS-9600TFU2L) has been tested and found to comply with the limits for a Class B digital device, pursuant to Part 15 of the FCC rules. These limits are designed to provide reasonable protection against harmful interference in a residential installation. This equipment generates, uses and can radiate radio frequency energy and, if not installed and used in accordance with the instructions, may cause harmful interference to radio communications. However, there is no guarantee that interference will not occur in a particular installation. If this equipment does cause harmful interference to radio or television reception, which can be determined by turning the equipment off and on, the user is encouraged to try to correct the interference by one or more of the following measures:

- Reorient or relocate the receiving antenna.
- Increase the separation between the equipment and receiver.
- Connect the equipment into an outlet on a circuit different from that to which the receiver is connected.
- Consult the dealer or an experienced radio/TV technician for help.

Note: *A shielded Hi-Speed USB interface cable with ferrite core installed on the scanner connector and must be used with this equipment.*

Caution: Changes or modifications not expressly approved by the manufacturer responsible for compliance could void the user's authority to operate the equipment.

This device complies with Part 15 of the FCC Rules. Operation is subject to the following two conditions: (1) This device may not cause harmful interference, and (2) this device must accept any interference received, including interference that may cause undesired operation.