

Supplement

ScanMaker s450/s350 features, scenarios, and information



Getting to Know Your ScanMaker s450/s350

The ScanMaker s450/s350 high-performance scanner with the versatility to scan photos and film. Features include 48-bit color, resolution of 4800 dpi (for s450) or 3800 dpi (for s350), scan bed size of 8.5" x 11.7", and seven Smart-Touch buttons on the front panel for easy access to scanner functions. The s450/s350 has a built-in transparency adapter for scanning film and transparencies up to 1.77" x 10". Also featured is ColoRescue™ -- Microtek's one-touch color restoration to revive faded color in both photos and film.

Contents

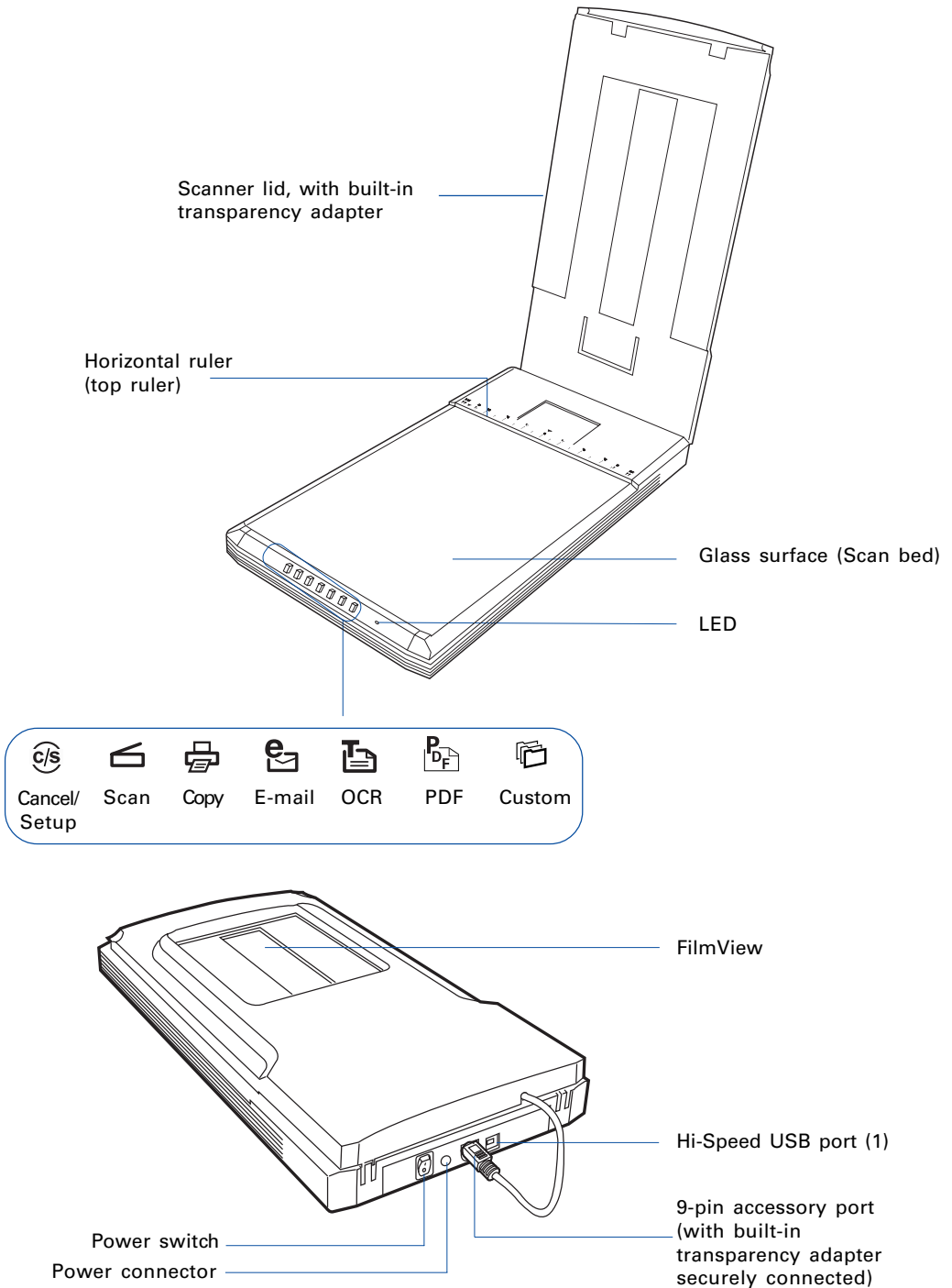
Getting to Know Your ScanMaker s450/s350	1	Scanning Film	9
Features of the ScanMaker s450/s350	2	Using the FilmView	9
Taking a Closer Look	3	A. Scanning 35mm Filmstrip	10
How the Smart-Touch Scanner Buttons Work	4	B. Scanning 35mm Slides	12
Scanning Scenarios	5	Specifications / System Requirements	13
Scanning Photos (1)	6	FCC Compliance Statement	14
Scanning Photos (2)	7		

Features of the ScanMaker s450/s350

The ScanMaker s450/s350 comes with several important features, including the following:

- **Integrated 35mm transparency adapter:** With a transparency adapter built in to the scanner lid for scanning slides, negatives, and transparencies built into the scanner lid, the ScanMaker s450/s350 improves your productivity and saves you money in having to acquire additional film-scanning accessories. The transparency adapter also features the FilmView™ lightbox — a window with a light source that lets you preview film or slides before they are loaded onto the scan bed for added scanning convenience.
- **Exclusive film holder:** This specially designed Microtek accessory is designed to hold slides and film in place. By loading the film holder on the scan bed before scanning film, you can ensure perfect alignment of your images and achieve consistent scans. You can use just one film holder to scan both 35mm slides and filmstrip.
- **Seven Smart-Touch buttons:** These buttons on the front panel of the scanner provide you with a quick and easy way to launch frequently used scanner functions. All it takes is one touch of a button — and you can launch the scanner button's corresponding function. The seven Smart-Touch buttons include Cancel/Setup, Scan, Copy, E-mail, OCR, PDF, and Custom.
- **Microtek's ColoRescue™:** This color restoration solution restores faded colors in both photos and film, bringing hues back to their original luster and brilliance for more vibrant images. ColoRescue's one-click, automatic color recovery process is simple and straightforward, involving no learning curve or hassle.
- **Microtek ScanWizard 5 scanning software:** ScanWizard 5 features full scanning tools that both novice and experienced scanner users will find productive and easy to use. The Standard Control Panel offers a simple and straightforward way to complete a scanning session, while the Advanced Control Panel provides you with additional controls to fine-tune your scans.

Taking a Closer Look



How the Smart-Touch Scanner Buttons Work



***Note:** The Smart-Touch buttons on the front panel of your scanner automate frequently performed tasks, such as Scan to File, Send to Printer, etc. For each scanner button, the parameters governing the use of that button are defined or set through the Microtek Scanner Configuration (MSC) utility. You can use the MSC, for instance, to define how many copies are to be printed of your scan every time you hit the “Copy” button. To launch the MSC, exit ScanWizard 5 first, then double-click the MSC icon on your desktop.*

The ScanMaker s450/s350 is equipped with seven Smart-Touch buttons for easy access to frequently used scanner functions. To carry out a specific task, simply press the corresponding button on the scanner. The Smart-Touch buttons are:

1. **Cancel/Setup:** This button cancels an ongoing scan job, or launches the Microtek Scanner Configuration utility when the scanner is idle.
2. **Scan:** This button captures images that can be automatically saved as files or sent to another application for further processing.
3. **Copy:** This button scans the image and sends it to your printer, transforming your scanner and printer into a convenient copy station. Simply specify the number of copies you want. To use the **Copy** button to print a stack of documents:
 - Place the first page on the scanner glass surface.
 - Press the Copy button to scan an image to a file, then automatically output to your specified printer.
 - Load the next page and press the Copy button again. The scanner works in similar fashion to your printer, printing documents one after another with no interruptions.
4. **E-mail:** This button scans the image and delivers it directly to your e-mail editor.
5. **OCR:** This button performs OCR (Optical Character Recognition) of a document and converts it to a fully editable digital file. Saves time from retyping documents into your word processor.
6. **PDF:** This button captures an image and automatically saves it as an Adobe Portable Document Format (PDF) file for immediate viewing with the Adobe Acrobat software.
7. **Custom:** This button customizes the Custom button to perform four of the most commonly used functions, including:
 - **Power Saving:** Turns the scanner lamp ON or OFF to save power and lamp life.
 - **Scan:** Defines another button to be a second “Scan” button. Use this if you need a second “Scan” button with different parameters from the first Scan button.
 - **Fax:** Launches a fax driver installed on your computer.
 - **Launch Application:** Defines an application to be launched.

Scanning Scenarios

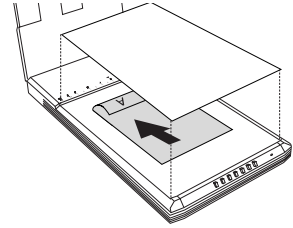
The following pages provide various scenarios for scanning with the ScanMaker s450/s350, including the following:

- Scanning photos (1). This scenario can also be your first scan in order to familiarize yourself with scanning basics. It makes use of the Standard Control Panel in ScanWizard 5.
- Scanning photos (2): This scenario is similar to above but uses the Advanced Control Panel in ScanWizard 5.
- Scanning film. This scenario utilizes the film holder to scan 35mm slides and filmstrip. It makes use of the Advanced Control Panel in ScanWizard 5.

Scanning Photos (1)

This scenario makes use of the Standard Control Panel.

1. Raise the scanner lid, and place the photo to be scanned face down on the scanner glass surface. Position the top end of the photo towards the **back** of the scanner
2. Place the **white mat** that came with your scanner on top of the photo, then lower the scanner lid on the scanner glass surface.

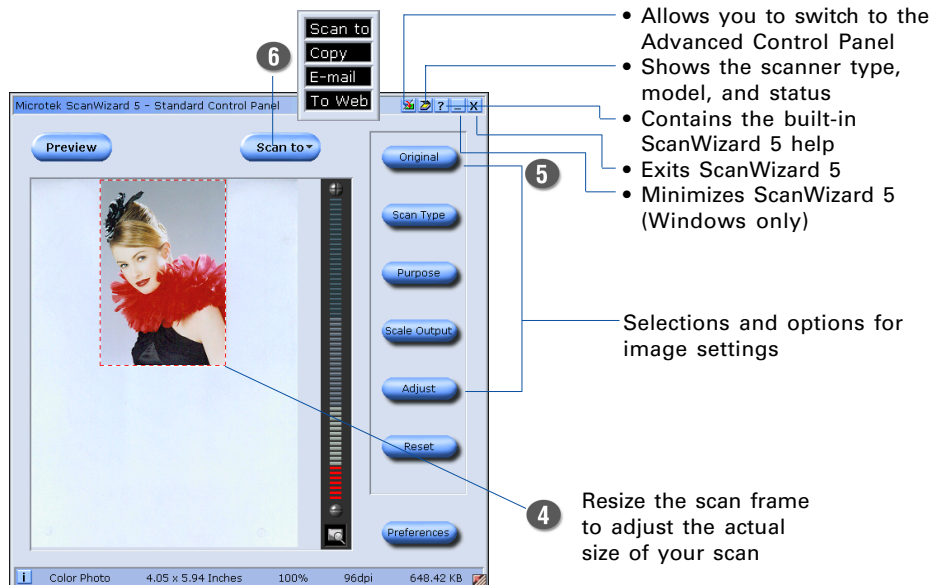


***Note:** Use of the white mat on top of your photo filters out unwanted light during scanning, and ensures the correct functioning of the automatic cropping feature when you do a preview scan.*

3. Double-click the *ScanWizard 5* icon (🖨️) on your desktop to launch the ScanWizard 5 Standard Control Panel.

When ScanWizard 5 launches, it automatically performs a fast preview of the material on your scanner glass surface and displays it in the preview area.

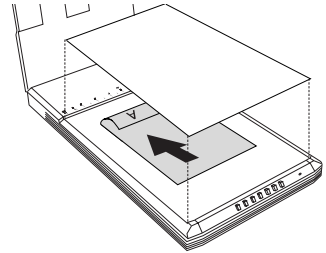
4. If you wish to resize the preview image, drag on the edge or corner of the scan frame (the floating dotted lines around the preview image). This allows you to determine the final area to be scanned.
5. Click the *Original* button, then select *Photo*.
6. Click the *Scan to* button to scan the image.



Scanning Photos (2)

This scenario makes use of the Advanced Control Panel.

1. Raise the scanner lid, and place the photo to be scanned face down on the scanner glass surface. Position the top end of the photo towards the **back** of the scanner.
2. Place the **white mat** that came with your scanner on top of the photo, then lower the scanner lid on the scanner glass surface.

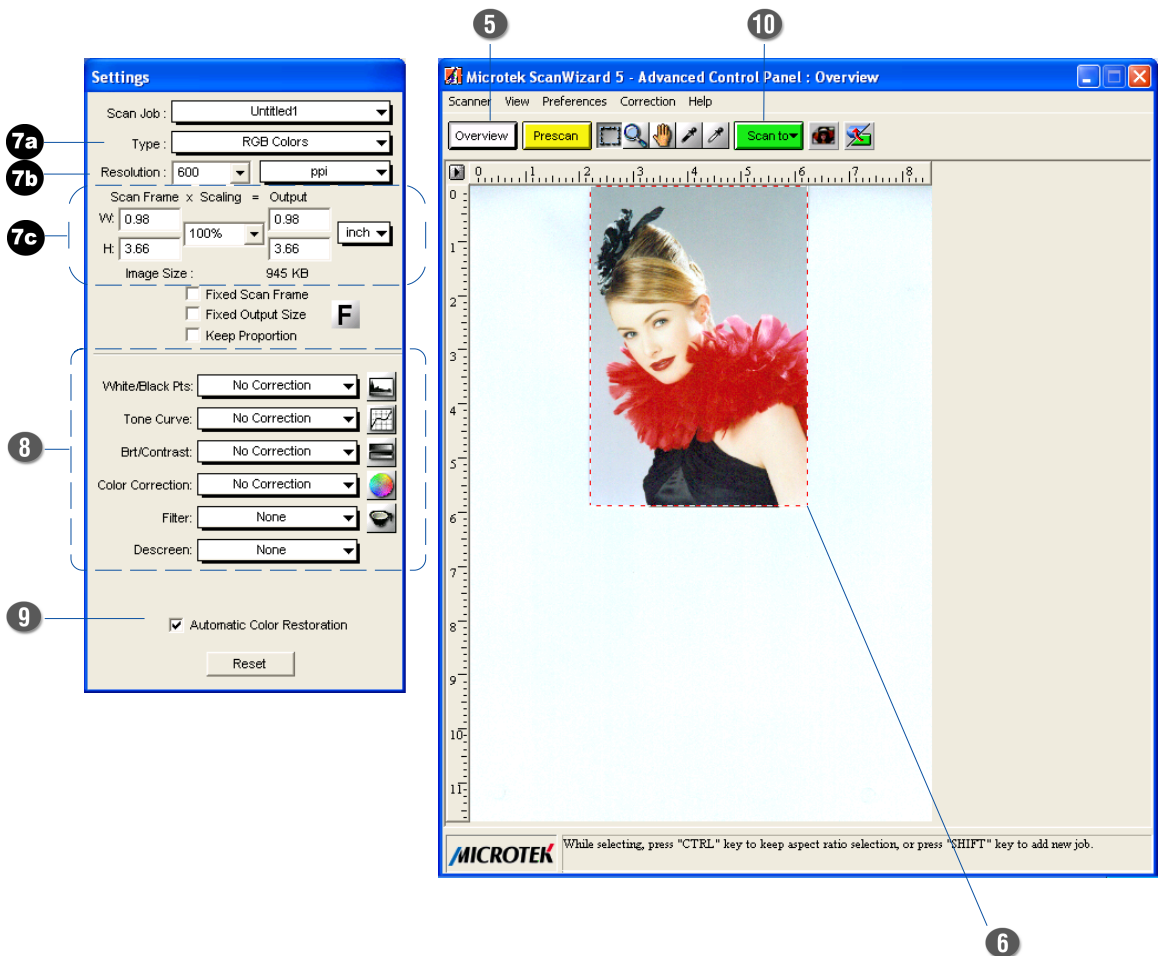


***Note:** Use of the white mat on top of your photo filters out unwanted light during scanning, and ensures the correct functioning of the automatic cropping feature when you do a preview scan.*

3. Double-click the *ScanWizard 5* icon (🖨️) on your desktop to launch the ScanWizard 5 Standard Control Panel.

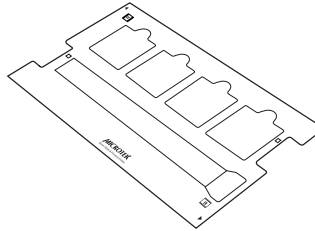
When ScanWizard 5 launches, it automatically performs a fast preview of the material on your scanner glass surface and displays it in the preview window.

4. Click the *Switch* icon (🔄) on the right corner of the Standard Control Panel to switch to the Advanced Control Panel.
5. Click the *Overview* button to perform a preliminary scan of the image, which will appear in the preview window.
6. If you wish to resize the preview image, drag on the edge or corner of the scan frame (the floating dotted lines around the preview image). This allows you to determine the final area to be scanned.
7. Specify your scanning requirements in the *Settings* window.
 - a) Select a desired image type.
 - b) Select a desired resolution.
 - c) Adjust the scan frame settings if necessary.
8. Adjust image quality if necessary, using the Advanced Image Correction (AIC) tools.
9. If the colors in your photo are faded and need restoring, check the “Automatic Color Restoration” box in the Settings window.
10. Click the *Scan to* button to scan the image.



Scanning Film

To scan film, use the film holder included with your scanner package, and match it with the correct type of film to be scanned, such as 35mm slides and filmstrip. Using the film holder ensures precise alignment of film to yield consistent scans, and aids in the correct performance of the automatic cropping* feature during film scanning.



Notes on automatic cropping

For the scanner to perform automatic cropping during scanning, the following conditions below should all be met:

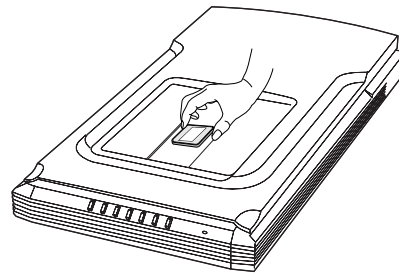
- Your computer's operating system should be either Windows or Mac OS X.
- The film holder is correctly aligned on the scan bed.
- The scan material is Positive or Negative Film, with the slide or filmstrip to be scanned correctly loaded on the film holder.
- In the Scan Job Queue window of ScanWizard 5, the “Multiple Auto-crop for EZ-Lock Film Holder” option is checked.

Using the FilmView

The FilmView is a clear window located on top of the built-in transparency adapter. Designed for previewing, it adds to your convenience in the selection and verification of slides or film prior to scanning.

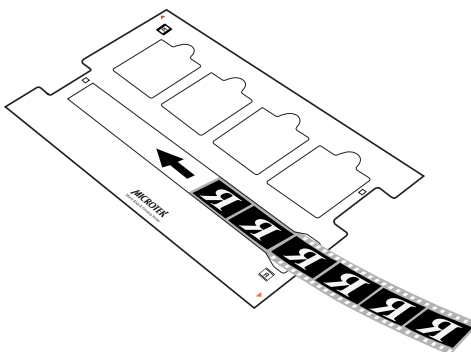
To use FilmView, make sure it is on, then simply use the light source of the FilmView for previewing material.

Note: If the light source of the FilmView is in “Sleep” mode, press the scanner's Custom button to exit or halt sleep mode. For more details on the Custom button, see the online help of the Microtek Scanner Configuration (MSC).



A. Scanning 35mm Filmstrip

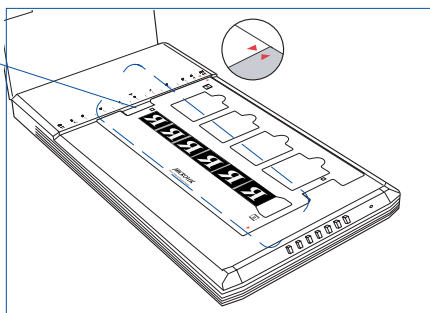
1. Load the filmstrip face down inside the holder. Slide the filmstrip along the slot of the holder until the filmstrip is fully loaded.



2. Raise the scanner lid, then place the film holder with the film on the scan bed. The holder should be positioned against the **top right** edge of the scanner bed, with the filmstrip slot running down the center.



The **calibration window** on the glass surface should be kept clear and free from any obstruction during scanning

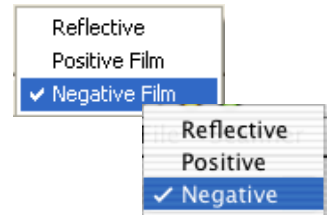


To make sure the auto multiframe cropping feature performs correctly, align the holder's front edge against the top ruler of the scanner.

Note that the arrow marks on both the film holder and scanner's top ruler are pointing to each other.

3. Gently lower the scanner lid down onto the scan bed; the lid should be able to close completely.
4. Double-click the *ScanWizard 5* icon (🖨️) on your desktop to launch the ScanWizard 5 Standard Control Panel, then click the *Switch* icon (🔧) on the right corner of the Standard Control Panel to switch to the Advanced Control Panel.

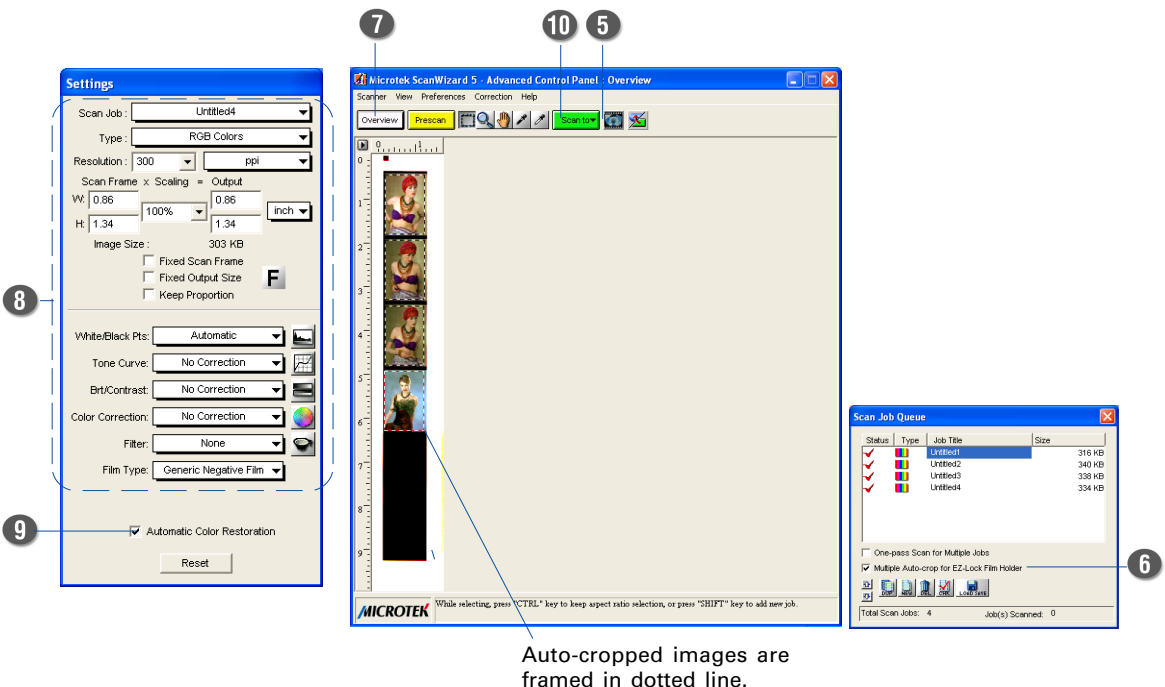
- In the Preview window of ScanWizard 5, click the *Scan Material* button or drop-down menu. Choose *Negative Film* (*Negative* for Mac OS X) to scan negatives; or choose *Positive Film* (*Positive* for Mac OS X) to scan transparencies and slides.



- Check the “Multiple Auto-crop for EZ- Lock Film Holder” option in the Scan Job Queue window.
- Click the *Overview* button to auto-crop and perform a preliminary scan of the film loaded onto the scanner.

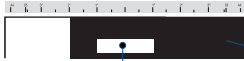
When done, you will see multiple scan frames that have been automatically cropped in the Preview window. Multiple job titles will appear in the Scan Job Queue window, numbered sequentially and all marked by a “Check” that indicates the jobs are ready to be scanned. The scan area (framed in dotted lines) will appear in the Preview window.

- Specify your scanning requirements in the *Settings* window.
- If the colors in your film sample are faded and need restoring, check the “Automatic Color Restoration” box in the Settings window.
- Click the *Scan to* button in the Preview window to scan all the checked jobs.

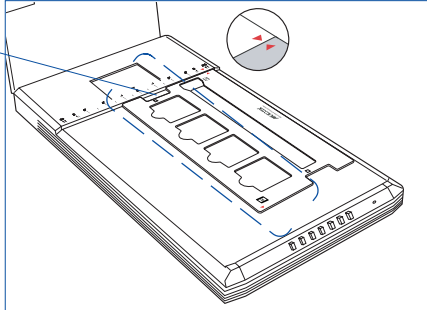


B. Scanning 35mm Slides

1. Raise the scanner lid, then place the film holder with the film on the scan bed. The holder should be positioned against the **top right** edge of the scanner bed, with the slide slot running down the center.



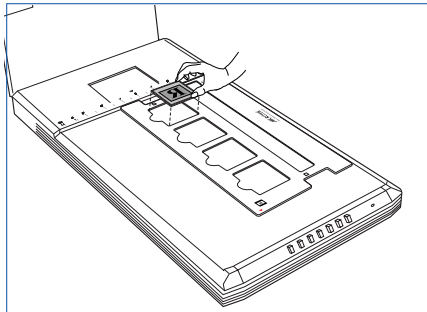
The **calibration window** on the glass surface should be kept clear and free from any obstruction during scanning



To make sure the auto multiframe cropping feature performs correctly, align the holder's front edge against the top ruler of the scanner.

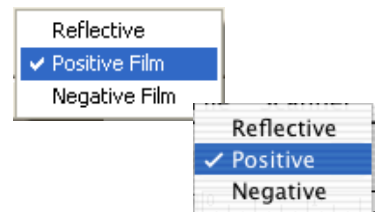
Note that the arrow marks on both the film holder and scanner's top ruler are pointing to each other.

2. Place the 35mm slide to be scanned in the film holder, with the slide facing down.



3. To complete your scanning, follow the procedures outlined in scanning 35mm filmstrip, from steps 3 to 10.

Before performing step 5, click the Scan Material icon, and choose *Positive Film* (*Positive* for Mac OS X).



Specifications

Scanning Modes	Color, grayscale, and black-and-white in a single scanning pass True 48-bit color (approx. 281 billion colors) 16-bit grayscale (approx. 65,535 shades of gray)
Scanning Area	Reflective: 8.5" x 11.7" (216 mm x 297 mm) Transparent: 1.77" x 10" (45 mm x 254 mm)
Resolution	Optical: 4800 dpi x 9600 dpi (ScanMaker s450); 3200 dpi x 6400 dpi (ScanMaker s350) Interpolated: 65,535 dpi (PC); 32,767 dpi (Mac)
Interface	Hi-Speed USB (USB 2.0)
Dimensions (L x W x H)	17.99" x 9.76" x 2.24" (457 mm x 248 mm x 57 mm)
Net Weight	5.07 lbs (2.3 kg)
Voltage	AC 100V to 120V (U.S. and Canada) AC 200V to 240V (Europe and others) 50/60 Hz
Power Consumption	15W (12V/1.25A)
Environment	Operating Temperature: 50° F to 104° F (10° C to 40° C) Relative Humidity: 20% to 85%
Power supply (AC/DC adapter)	<u>Voltage</u> <u>Manufacturer</u> <u>Model No.</u> 100V to 120V HARD HDAD15W101-123 200V to 240V HARD HDAD15W101-124

System Requirements

General requirements

- CD-ROM drive (for installing software)
- Color display with 24-bit color output capability
- 128MB RAM (256MB recommended)

PC and compatibles

- Pentium III PC or higher with USB or Hi-Speed USB (USB 2.0)
- Microsoft Windows 98SE, Me, 2000, XP or Vista

Macintosh

- iMac or Mac G3/G4/G5 with built-in USB port
- Mac OS X 10.3 or later

Important

Specifications, software bundles, and accessories are subject to change without notice. Not responsible for typographic errors.

FCC Compliance Statement

This equipment (Model: MRS-9600TU2) has been tested and found to comply with the limits for a Class B digital device, pursuant to Part 15 of the FCC rules. These limits are designed to provide reasonable protection against harmful interference in a residential installation. This equipment generates, uses and can radiate radio frequency energy and, if not installed and used in accordance with the instructions, may cause harmful interference to radio communications. However, there is no guarantee that interference will not occur in a particular installation. If this equipment does cause harmful interference to radio or television reception, which can be determined by turning the equipment off and on, the user is encouraged to try to correct the interference by one or more of the following measures:

- Reorient or relocate the receiving antenna.
- Increase the separation between the equipment and receiver.
- Connect the equipment into an outlet on a circuit different from that to which the receiver is connected.
- Consult the dealer or an experienced radio/TV technician for help.

Note: *A shielded Hi-Speed USB interface cable with ferrite core installed on the scanner connector end must be used with this equipment.*

Caution: Changes or modifications not expressly approved by the manufacturer responsible for compliance could void the user's authority to operate the equipment.

This device complies with Part 15 of the FCC Rules. Operation is subject to the following two conditions: (1) This device may not cause harmful interference, and (2) this device must accept any interference received, including interference that may cause undesired operation.

Responsible Party: Loi Han
Microtek Lab, Inc.
16941 Keegan Avenue
Carson, CA 90746
USA
Phone: 310-687-5800
Fax: 310-687-5950