

# Start Here

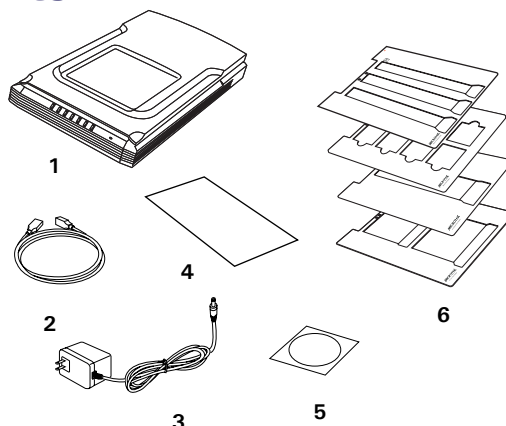
## ▼ Installing your Microtek ScanMaker s480/s380

### Step 1

### Unpack Contents

Unpack your scanner package and check for major components.

1. Scanner with built-in transparency adapter
2. Hi-Speed USB cable
3. Power adapter
4. White mat
5. Software CD
6. Film holders

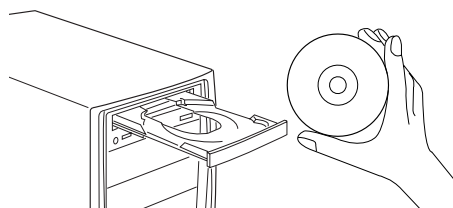


### Step 2

### Install Software

**Important:** Do not remove the yellow stickers from your scanner until you are told to do so. You must install software before connecting your scanner.

Always close any open programs and turn off Anti-virus utilities before installing software.



#### PC:

- A. Place the **Microtek CD-ROM** into the CD-ROM drive.
- B. Follow the on-screen instructions to install the driver and software.

**NOTE:** If the Microtek Software Installer screen does not come up automatically, double-click the following in succession: "My Computer"; the CD-ROM icon; then *cdsetup.exe* to start the installer program.

#### MAC:

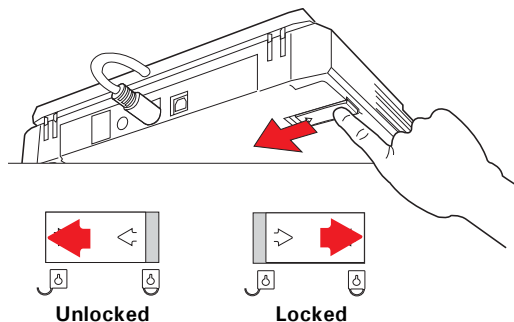
- A. Place the **Microtek CD-ROM** into the CD-ROM drive and install all the software components.
- B. Restart your computer.

**NOTE:** After rebooting your Macintosh, the Microtek software will attempt to locate your scanner on the system. Since this is your first install and you have not yet connected the scanner, simply ignore the message that appears and proceed to the next step.

## Step 3

### Unlock Scanner

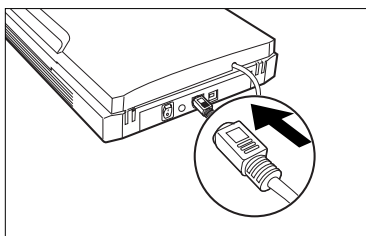
- Remove the yellow "Step 3" sticker from your scanner.
- With the scanner power off, tilt the back right corner of the scanner to see the locking switch at the bottom.
- Push the locking switch to the position as indicated in the graphic, with the icon on the lock showing as "Unlocked".



**NOTE:** To lock the scanner (for shipping and other reasons), tilt the scanner and look for the locking switch on the right corner at the back, then push the locking switch to the "Locked" position. **DO NOT** turn the scanner upside down when attempting to lock the unit.

## Step 4

### Connect Scanner

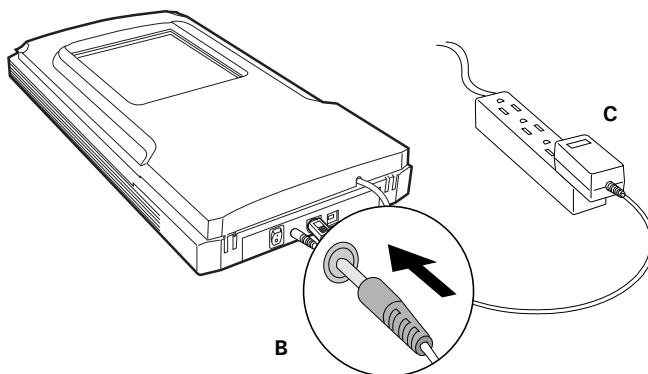


#### To the scanner lid

Make sure the scanner lid (with built-in transparency adapter) is properly connected to the scanner's 9-pin accessory port. Plug the connector into the port if the scanner lid is not securely connected.

#### To the power adapter

- Remove the yellow "Step 4" sticker from your scanner.
- Connect the power adapter to the back of the scanner.
- Plug the power adapter into a power source.



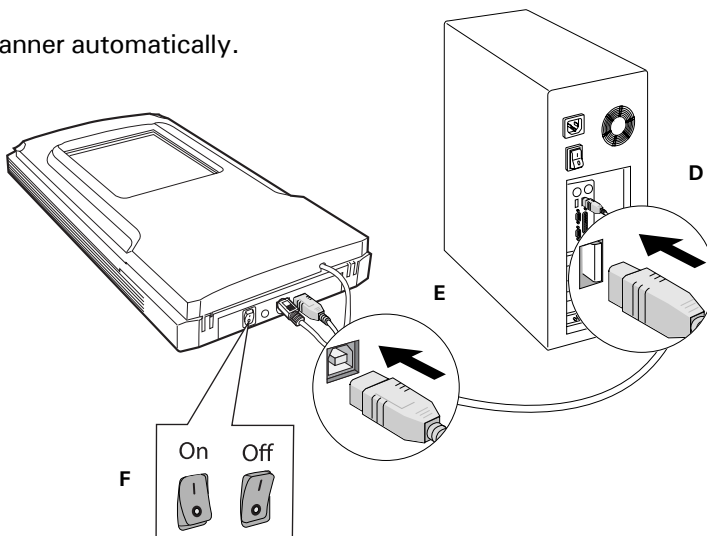
## Step 4: Connect Scanner (cont.)

### To the Hi-Speed USB cable

- D. Connect one end of the cable to your computer.
- E. Connect the other end of the cable to the scanner.
- F. Turn the power switch at the back panel of your scanner to "On"; the LED lights up at the front panel of the scanner.








The system will detect your scanner automatically.

**NOTE:** If your computer has both Hi-Speed USB (USB 2.0) and USB 1.1 ports, connect the cable to the Hi-Speed USB port. Use the USB 1.1 port only if your computer does not have Hi-Speed USB.



## Scanner Buttons

The **ScanMaker s480/s380** is equipped with seven scanner buttons, providing quick access to the most frequently used functions. These buttons are **Cancel/Setup**, **Scan**, **Copy**, **E-mail**, **OCR**, **PDF**, and **Custom**.

-  **Cancel/Setup:** Cancels the scanning job when the scanner is scanning. Launches the Microtek Scanner Configuration (MSC) utility when the scanner is not scanning.
-  **Scan:** Captures images that can be saved as files or sent to an image-editing application.
-  **Copy:** Scans the image and sends it to your printer.
-  **E-mail:** Scans the image and delivers it directly to your e-mail editor.
-  **OCR:** Scans a text document, converts, and saves it in text file format. Files may be immediately edited if configured in the MSC utility.
-  **PDF:** Scans the image and saves it in the Adobe Acrobat PDF format.
-  **Custom:** Customizes this button to perform your preferred function, such as Power Saving, Scan, Fax, or Launch Application.

# Scanning Basics

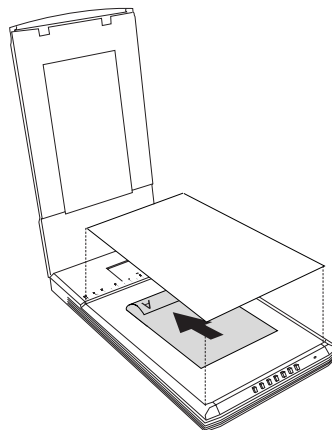
**NOTE:** The scanning procedures outlined here make use of the Standard Control Panel in ScanWizard 5. To use the Advanced Control Panel, refer to the Supplement.

## 1. Place the scan material

- A. To scan photos, place the photo to be scanned on the scanner bed. The top end of the original should be positioned towards the **back** of the scanner, with the surface to be scanned facing down. Then, place the **white mat** on top of the photo.

**NOTE:** Use of the white mat on top of your photo filters out unwanted light during scanning, and ensures the correct functioning of the automatic cropping feature when you do a preview scan.

- B. To scan film, use the film holders. See “Using the Film Holders” for more details.



## 2. Launch ScanWizard 5

To launch ScanWizard 5 as a stand-alone program, double-click the **ScanWizard 5** icon on your desktop. The scanner will automatically perform a “fast preview” of your image, based on settings specified under the Original, Scan Type, and Purpose categories (buttons).



## 3. Specify your preferences

Use the following toolbar buttons to change the settings according to your preferences.

**Original** – Defines the category of the media (scan material).

**Scan Type** – Selects the output image type (color, gray, or B&W).

**Purpose** – Sets the image resolution to match your target application.

**NOTE:** Click the **Scale Output**, **Adjust**, and **Reset** buttons if you need to make further adjustments.



## 4. Scan your material

- A. Click the **Scan to** button from the **ScanWizard 5** Control Panel.
- B. When the **Save As** dialog box appears, specify the folder location, a file name, and the format for the output image, then click **Save**. The image is scanned and saved to the specified location.

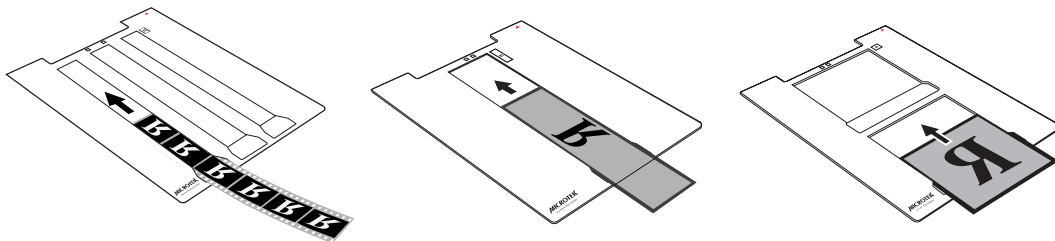
### Send image to application after saving file:

If this option is checked, the scanned image is saved first and then automatically delivered to an image editing software, a web browser, as the Adobe Acrobat software, as indicated in the destination box.

## Using the Film Holders

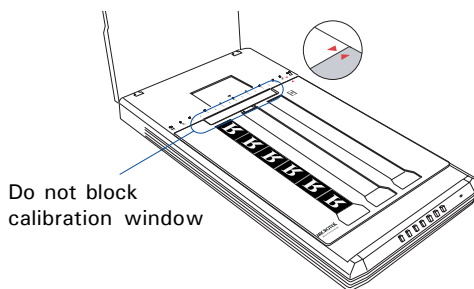
### A. To load film:

1. Load the film inside the holder, with the film's shiny base facing down. Slide the film along the slots of the holder until the film is fully loaded.



2. Raise the scanner lid, and place the film holder with the film on the scan bed. The holder should be flush against the top ruler of the scanner.

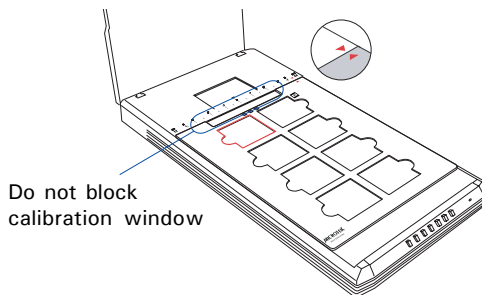
Make sure that the red arrow marks on both the holder and the scanner are pointing to each other when the holder are put together.



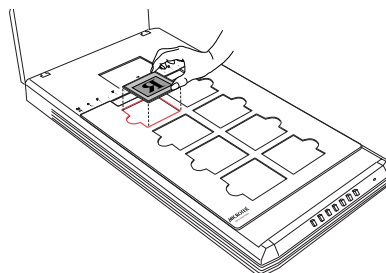
### B. To load slides:

1. Raise the scanner lid, and place the film holder on the scan bed. The holder should be flush against the top ruler of the scanner.

Make sure that the red arrow marks on both the holder and the scanner are pointing to each other when the holder are put together.



2. Place the slide in the film holder, with the slide facing down.

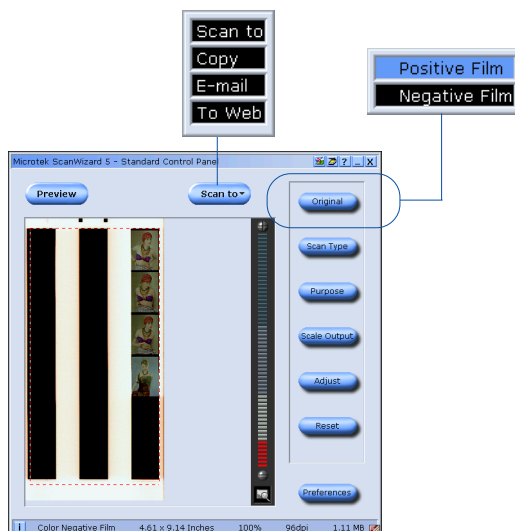


## Using the Film Holder (cont.)

## Scanning Film

1. Launch ScanWizard 5. In the Standard Control Panel, click the **Original** button. Choose "Negative Film" to scan negatives, or choose "Positive Film" to scan slides.
2. Click the **Preview** button in the Standard Control Panel to perform a preliminary scan of the image.
3. Click the **Scan to** button to scan the image.

After the scan, the scanned image can be saved as a file, opened in an image editing program, sent to a printer, attached in an e-mail, or saved in the PDF format.



## Restoring Color

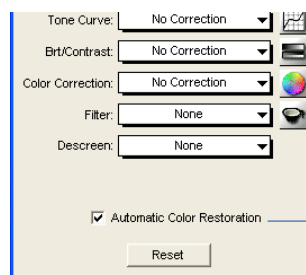
ColoRescue™ is an automatic color recovery system that restores faded color in both photos and film to their original luster.

To use ColoRescue:

1. Launch ScanWizard 5. When the Standard Control Panel appears, click the **Switch** icon on the upper right corner to switch to the Advanced Control Panel.



2. In the ScanWizard Settings window, check the "Automatic Color Restoration" check box. The next time you scan faded photos or film, ColoRescue will restore the faded colors to their original brilliance.



Select Automatic Color Restoration

## Problems?

The LED on the button panel indicates the status of the scanner.



**On**  
Ready to scan.



**Flashing**  
Warming up or scanning.



**Off**  
Scanner is off.

If you encounter any problems, check the section below and follow the suggested solution if your problem is listed. You may also want to go over installation steps 1 to 4 of this "Start Here" document to make sure that you have followed all procedures properly.

### 1. No light comes on when the scanner is turned on.

Make sure your scanner is connected to your computer and plugged into a power source.

### 2. Add/Remove Hardware Wizard appears on your screen.

Click the "Cancel" button and close the Control Panel. Disconnect the USB cable from the back of your computer, and refer to the installation instructions in this guide.

### 3. When trying to scan, an error message appears on your screen that reads, "Can't Find Scanners".

Make sure your scanner is unlocked (see Step 3).

Make sure your scanner is connected to your computer and plugged in to a power source (see Step 4).

Uninstall and reinstall the ScanWizard 5 software.

### 4. After clicking scan, a blank screen appears.

Make sure your scanner is unlocked (see Step 3).

Uninstall and reinstall the ScanWizard 5 software.

### 5. Having trouble scanning negatives or slides?

Make sure the scanner lid (with built-in transparency adapter) is properly installed, with its connector securely connected to the scanner's 9-pin accessory port.

Make sure you place the film holder with the loaded film properly on the scan bed. Do not block the calibration area (as indicated in the "Using the Film Holders" section).

From the **ScanWizard 5 Standard Control Panel**, go to the **Original** button category, then proceed to the **Film** subcategory. Make sure you select either the **Positive** or **Negative** option.

# Do You Need Assistance?

## Manuals

If you have additional questions and need further instruction or information, we provide electronic manuals for:

1. Using your ScanMaker s480/s380 (Supplementary information)
2. Using the ScanWizard 5 scanning software
3. Using the bundled third-party software

To access the electronic manuals: Insert the scanner's software CD-ROM into your computer's CD-ROM drive. Next, locate and click the "Manuals" option when the software installer window appears on your screen. Finally, select and click the title of the manual you wish to view.

## Missing Items

If your package is missing items, please call the Microtek Customer Service Department.



### Energy Star Notice

As an ENERGY STAR Partner, Microtek International, Inc. has determined that this scanner meets the ENERGY STAR guidelines for energy efficiency.

### Power Adapter

Use only power supplies (AC/DC adapters) listed below:

Voltage	Manufacturer	Model No.
200V to 240V	HARD	HDAD15W101-124
100V to 120V	HARD	HDAD15W101-123

**NOTE:** Please make sure that the electrical outlet to where the scanner will be connected is nearby and readily accessible.

Copyright © 2007 Microtek International, Inc. The following are trademarks or registered trademarks of their respective companies: Microtek, ScanMaker, ScanWizard of Microtek International, Inc. All other trademarks or registered trademarks are the property of their respective holders. Specifications, software and hardware bundles are subject to change without notice. Delivery of technical support services subject to change without notice. Not responsible for typographical errors. 021507

# MICROTEK